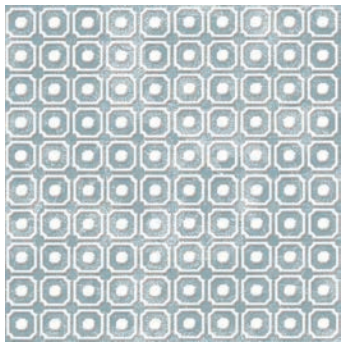
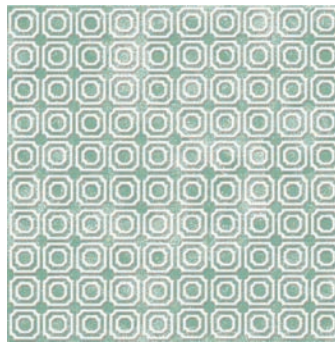


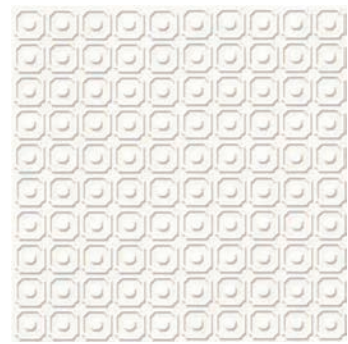
Mantra



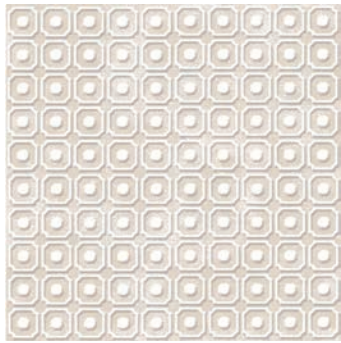
Blue
IF08X8MB



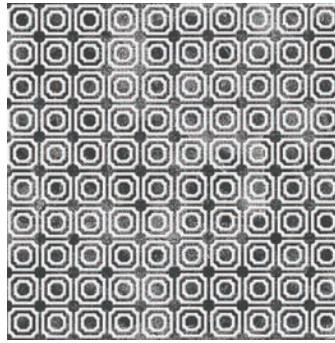
Green
IF08X8MGN



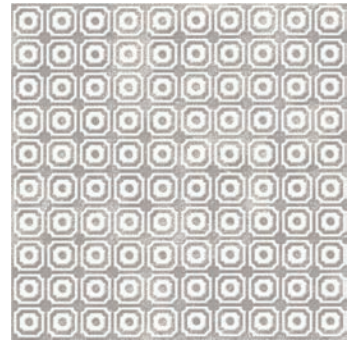
White
IF08X8MW











Beige
IF08X8MBG



Black
IF08X8MBK



Gray
IF08X8MG

								
DCOF	RESISTANCE TO CHEMICALS	RESISTANCE TO STAINS	WATER ABSORPTION %	BENDING STRENGTH	SKID RESISTANCE	RESISTANCE TO ABRASION	FROST RESISTANCE	THERMAL SHOCK RESISTANCE
>.42	GA GLA GHA ISO 10545.13	CLASSE 5 ISO 10545.14	≤0.5% ISO 10545.3	> 35N/mm ² ISO 10545.4	R9 DIN 51130	CLASSE 4 PEI ISO 10545-7	RESISTANT ISO 10545.12	RESISTANT ISO 10545.9