

# STONEFIRE





**Almond**



**Beige**



**Noce**



1093366 - 12"x24"



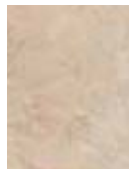
1093266 - 12"x24"



1093267 - 12"x24"



1093343 - 18"x18"



1093345 - 9"x12"



1093088 - 18"x18"



1093272 - 9"x12"



1093089 - 18"x18"



1093273 - 9"x12"



1093342 - 12"x12"



1093348  
2"x2" Mosaic  
(12"x12")



1093086 - 12"x12"



1093169  
2"x2" Mosaic  
(12"x12")



1093087 - 12"x12"



1093170  
2"x2" Mosaic  
(12"x12")



1093346  
6"x6"

**TRIMS**



1093347 - 3"x12"  
Bullnose



1093165  
6"x6"

**TRIMS**



1093167 - 3"x12"  
Bullnose



1093166  
6"x6"

**TRIMS**



1093168 - 3"x12"  
Bullnose

GLAZED PORCELAIN

18"x18" - 12"x24" - 12"x12" - 6"x6" - 12"x12" mosaic - 9"x12" wall



Grey



Rust



1093264 - 18"x18"



1093268 - 12"x24"



1093262 - 12"x12"



1093278  
2"x2" Mosaic  
(12"x12")



1093274  
6"x6"

TRIMS



1093276 - 3"x12"  
Bullnose



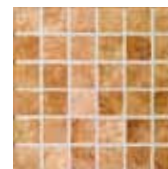
1093265 - 18"x18"



1093269 - 12"x24"



1093263 - 12"x12"



1093279  
2"x2" Mosaic  
(12"x12")



1093275  
6"x6"

TRIMS



1093277 - 3"x12"  
Bullnose



## COLOR SPECIFICATIONS AND SIZES AVAILABLE

Nominal Size	ALMOND	BEIGE	NOCE	GREY	RUST
18"x18"	1093343	1093088	1093089	1093264	1093265
12"x24" ♦	1093366	1093266	1093267	1093268	1093269
12"x12"	1093342	1093086	1093087	1093262	1093263
9"x12" Wall	1093345	1093272	1093273	-	-
6"x6"	1093346	1093165	1093166	1093274	1093275
2"x2" Mosaic (12"x12")	1093348	1093169	1093170	1093278	1093279
3"x12" Bullnose	1093347	1093167	1093168	1093276	1093277

## PACKAGING

NOMINAL SIZE	METRIC (CM)	THICKNESS (CM)	PIECES PER BOX	SQ. FT PER BOX	BOXES PER PALLET	SQ. FT PER PALLET	WEIGHT PER PALLET
18"x18"	45x45	10 mm	6	13.5	32	432	1887
12"x24"	30x60	11 mm	6	12	48	576	2584
12"x12"	30x30	10 mm	13	13	48	624	2796
9"x12" Wall	22.5x30	8 mm	15	11.25	72	810	2887
6"x6"	15x15	10 mm	30	7.5	72	540	1890
2"x2" Mosaic (12"x12")	30x30	10 mm	10	10	45	450	1895
3"x12" Bullnose	7.5x30	10 mm	12	3	168	504	2184

ALL OTHER SIZES WILL BE PACKAGED AS ORDERED.  
PLEASE CONTACT FLORIM CUSTOMER SERVICE AT 877-FLORIM1 FOR PACKAGING INFORMATION.

♦ MINIMUM GROUT SIZE RECOMMENDED = 5 MM (OR APPROX. 3/16" IF STAGGERED TILE PLACEMENT, WE RECOMMEND USING A 30% OFFSET. IF SPECIFIED BRICK PATTERN WITH 1/2 PATTERN MANDATORY, A BIGGER GROUT IS RECOMMENDED TO HIDE IMPERFECTIONS OF INSTALLATION (MINIMUM 1/4").

## SHADE VARIATION



**V1**  
**UNIFORM APPEARANCE**  
Differences among pieces from the same production run are minimal.



**V2**  
**SLIGHT VARIATION**  
Clearly distinguishable differences in texture and/or pattern with similar colors.



**V3**  
**MODERATE VARIATION**  
While the colors present on a single piece of tile will be indicative of the colors to be expected on the other tiles, the amount of colors on each piece will vary significantly.



**V4**  
**SUBSTANTIAL VARIATION**  
Random color differences from tile to tile, so that one tile may have totally different colors from that on other tiles. Thus, the final installation will be unique.

## TECHNICAL SPECIFICATIONS

Surface Abrasion	PEI	IV	ASTM C1027
Water Absorption		≤ 0.5%	ASTM C373
Chemical Resistance		CLASS A	ASTM 650
Coefficient of Friction	(Dry)	≥ 0.75 ♦	ASTM C1028
	(Wet)	≥ 0.65 ♦	ASTM C1028
Stain Resistance		CLASS A	ASTM C1378
Breaking Strength		≥ 400	ASTM C648
Resistance to freeze		RESISTANT	ASTM C1026
Scratch Hardness		≥ 6	MOHS

ALL FLORIM USA PRODUCTS MEET OR EXCEED ALL STANDARDS IN ANSI A137.1.

♦ DUE TO THE INHERENT NATURE OF FIRED PORCELAIN TILE, IT IS IMPORTANT TO NOTE THAT THE COEFFICIENT OF FRICTION MAY VARY WITHIN AND BETWEEN PRODUCT RUNS.

## WHY PORCELAIN?

There are many reasons to choose impervious porcelain tile over other floor coverings. It offers the largest array of design options and holds its value the longest. In a comparison between the many different flooring options, porcelain tile offers one of the most durable and least expensive options over the lifespan of the building.

### Benefits of Porcelain Tile

- Impervious to water
- Easy to maintain
- Variety of design options
- Environmentally friendly
- Resistant to germs and bacteria
- Fade resistant
- Fire resistant
- Durable - best long-term value vs. other floor coverings

## HOW TO MAINTAIN YOUR PORCELAIN TILE

- Sweep or vacuum regularly.
- Wash with a household cleaner and hot water then rinse with clean water (do not use wax, oil-based, or abrasive cleaners).

Find more care, maintenance, and installation tips at [www.florim.com](http://www.florim.com)

Colors Shown in this brochure may vary from actual product.  
Final selection should be made from actual product samples.



### PROGRESS THAT TOUCHES AND INVESTS IN THE ENTIRE SOCIETY

As a active member of the U.S Green Building Council, Florim spreads awareness to the entire American communities and encourages towards the use of building solutions inspired by environmentally friendly practices. Using Florim products for project implementation, will positively contribute in obtaining scores and points required for earning the LEED certification (Leadership in Energy and Environmental Design).

### A COMMITMENT TO THE DEVELOPMENT OF PRODUCTS FOR A CONSCIOUS BUILDING TRADE

Florim offers products containing recycled material. The adoption of eco-compatible production systems is merit of Italian designs produced in the U.S.

### TECHNICAL DEVELOPMENT THAT CONSIDERS THE NATURAL ENVIRONMENT

Florim commits to the eco-compatible project and translates the same into an avant-gard production process, minimizing the negative impact on the environment.



LEED



**PROGRESS THAT TOUCHES AND INVESTS IN THE ENTIRE SOCIETY**

As a active member of the U.S Green Building Council, Florim spreads awareness to the entire American communities and encourages towards the use of building solutions inspired by environmentally friendly practices.

Using Florim products for project implementation, will positively contribute in obtaining scores and points required for earning the LEED certification (Leadership in Energy and Environmental Design).

**A COMMITMENT TO THE DEVELOPMENT OF PRODUCTS FOR A CONSCIOUS BUILDING TRADE**

Florim offers products containing recycled material. The adoption of eco-compatible production systems is merit of Italian designs produced in the U.S.

**TECHNICAL DEVELOPMENT THAT CONSIDERS THE NATURAL ENVIRONMENT**

Florim commits to the eco-compatible project and translates the same into an avant-guard production process, minimizing the negative impact on the environment.



300 International Blvd. Clarksville, TN 37040  
toll free 877 - Florim1 (356-7461)  
tel. 931 645 5100  
[www.florimusa.com](http://www.florimusa.com)

