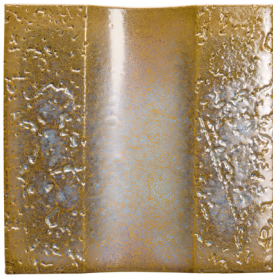


**NAMI**  
Porcelain Wall Tile

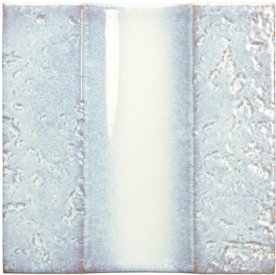
Steel Mist 4.7" x 4.7" x 7/16"



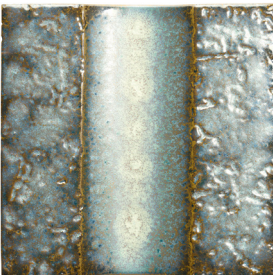
**White**  
4.7" x 4.7" x 7/16"  
IFSNAMIWHT



**Butternut**  
4.7" x 4.7" x 7/16"  
IFSNAMIBNUT



**Ice**  
4.7" x 4.7" x 7/16"  
IFSNAMIICE



**Steel Mist**  
4.7" x 4.7" x 7/16"  
IFSNAMISMIST



**TECHNICAL SPECIFICATIONS**

PRODUCT PERFORMANCE	RESULT
Water Absorption	<0.5%
Modulus of Rupture	>29
Breaking Strength	>1500
Thermal Shock Resistance	Resistant
Crazing Resistance	Resistant
Color Shade Variation	V3
MOHS	5
Chemical Resistance	A/LA/HA
Recommended Grout Joint	1/8"
Stain Resistance	5
Frost Resistance	Resistant