

Tapestri, *Glazed Porcelain*.

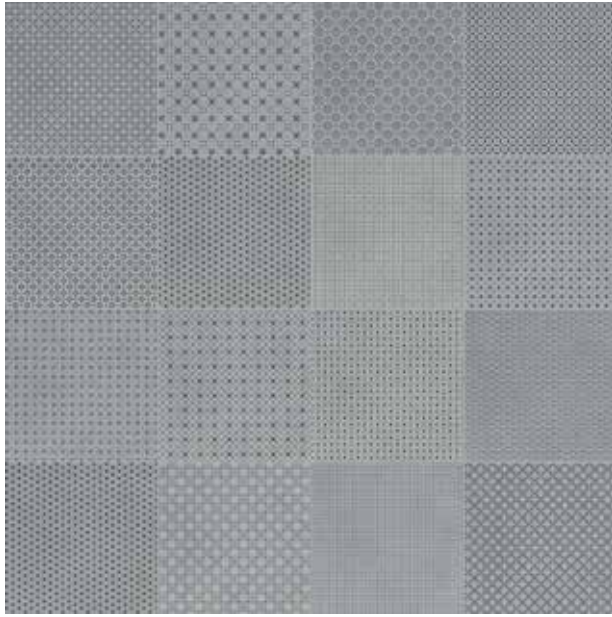
Experimenting with geometric designs,  
color tones and interweaving patterns.



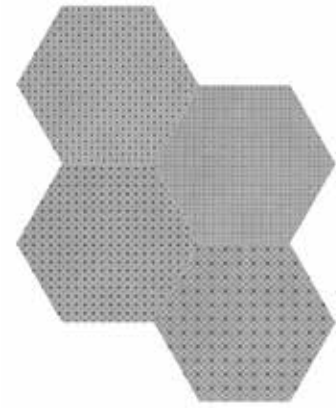
Modern geometric  
compositions  
with sophistication  
and enduring style.



Tapestri, *Cashmere Blend*



8 x 8 in / 20 x 20 cm  
Cashmere Blend  
Pressed  
Matte 4500-0977-0



8.5 in / 21.6 cm Hexagon  
Cashmere Blend  
Pressed  
Matte 4500-0985-0



8.5 in / 21.6 cm Hexagon  
Cashmere  
Pressed  
Matte 4500-0981-0

Tapestri, *Denim Blend*



8 x 8 in / 20 x 20 cm  
Denim Blend  
Pressed  
Matte 4500-0978-0



8.5 in / 21.6 cm Hexagon  
Denim Blend  
Pressed  
Matte 4500-0986-0



8.5 in / 21.6 cm Hexagon  
Grey Denim  
Pressed  
Matte 4500-0982-0



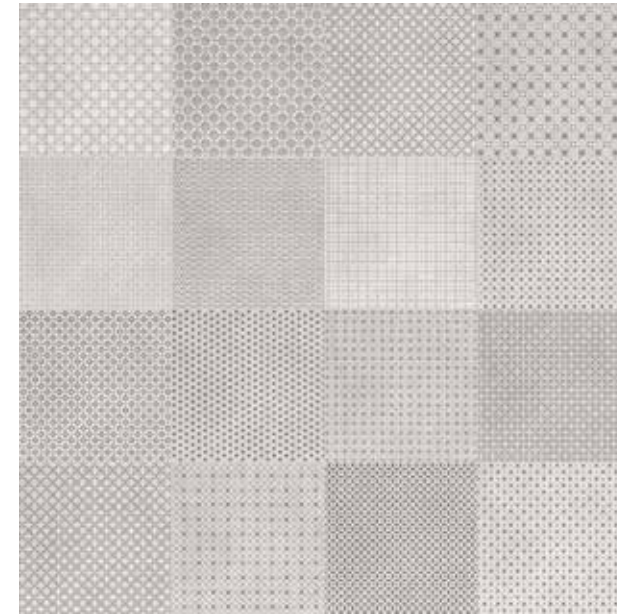
8.5 in / 21.6 cm Hexagon Tapestri Denim Blend Matte Pressed Tile



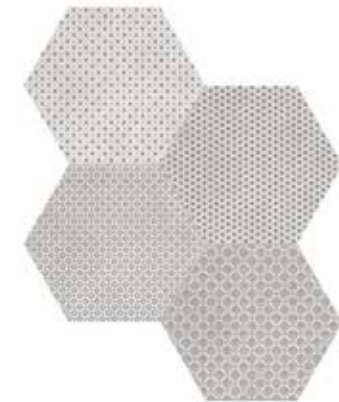
8.5 in / 21.6 cm Hexagon Tapestry Denim Blend Matte Pressed Tile  
On the floor: 8 x 48 in / 19.7 x 120 cm Aspen Paper Birch Matte Rectified Tile



Tapestri, *Wool Blend*



8 x 8 in / 20 x 20 cm  
Wool Blend  
Pressed  
Matte 4500-0980-0

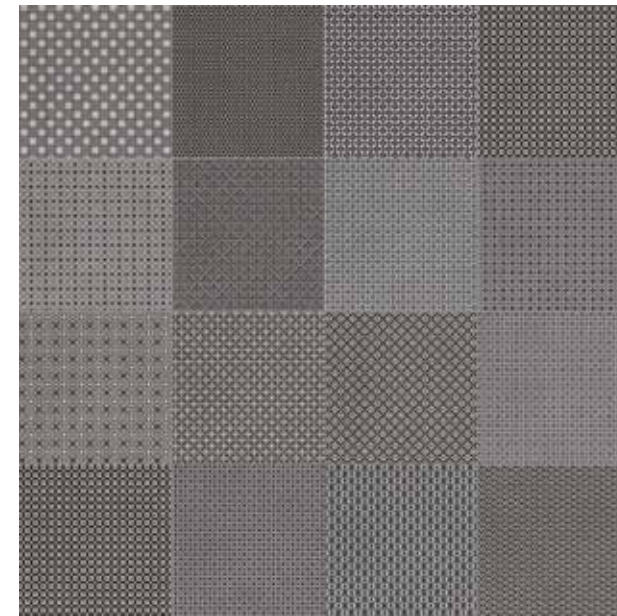


8.5 in / 21.6 cm Hexagon  
Wool Blend  
Pressed  
Matte 4500-0988-0



8.5 in / 21.6 cm Hexagon  
Wool  
Pressed  
Matte 4500-0984-0

Tapestri, *Silk Blend*



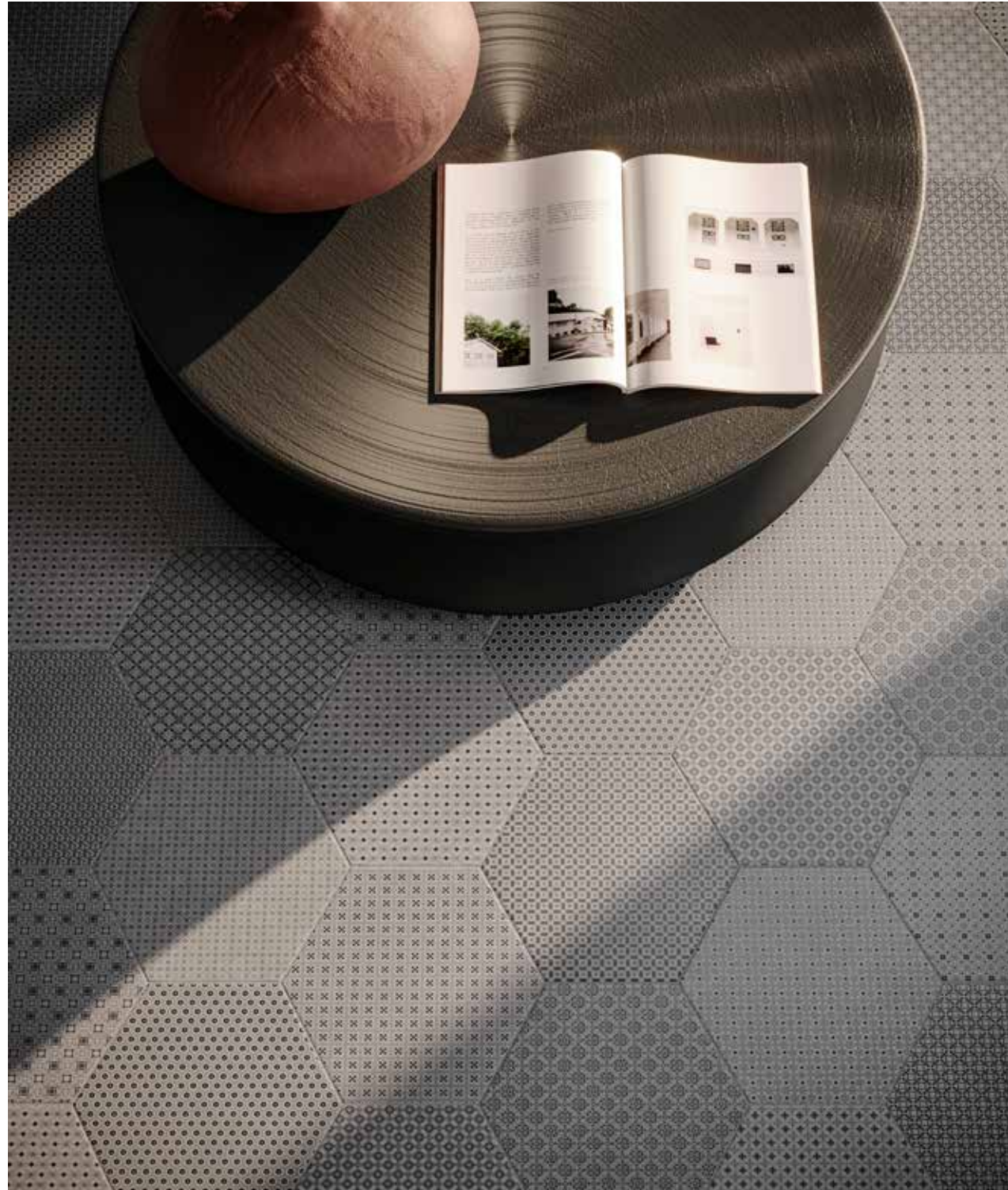
8 x 8 in / 20 x 20 cm  
Silk Blend  
Pressed  
Matte 4500-0979-0



8.5 in / 21.6 cm Hexagon  
Silk Blend  
Pressed  
Matte 4500-0987-0



8.5 in / 21.6 cm Hexagon  
Silk  
Pressed  
Matte 4500-0983-0



8.5 in / 21.6 cm Tapestri Cashmere Blend Hexagon Matte Pressed Tile



8.5 in / 21.6 cm Tapestri Wool Hexagon Matte Pressed Tile





*Technical Performance*  
Avant-garde design and attention to detail.

The goal of the design department was to create the utmost elegant and sophisticated product, a perfect blend of functionality and style. New technical aspects, innovative shapes, and a new color palette were designed to represent the vibrant and lively nature of metropolitan city life, inspired by its culture and history.



## Packaging information

Key logistical details including item codes and product specifications.

### Tapestri Product & Packaging Information

	ACTUAL DIMENSIONS	THICKNESS	ITEM CODE	LBS BOX	KGS BOX	PCS BOX	SQFT BOX	M <sup>2</sup> BOX	BXS SKID	SOFT SKID	M <sup>2</sup> SKID
8 x 8 in / 20 x 20 cm Tapestri CASHMERE BLEND MATTE PRESSED GLAZED PORCELAIN TILE	200 x 200 mm	9 mm	4500-0977-0	31.11	14.11	17	7.32	0.68	81	592.92	55.08
8 x 8 in / 20 x 20 cm Tapestri DENIM BLEND MATTE PRESSED GLAZED PORCELAIN TILE	200 x 200 mm	9 mm	4500-0978-0	31.11	14.11	17	7.32	0.68	81	592.92	55.08
8 x 8 in / 20 x 20 cm Tapestri SILK BLEND MATTE PRESSED GLAZED PORCELAIN TILE	200 x 200 mm	9 mm	4500-0979-0	31.11	14.11	17	7.32	0.68	81	592.92	55.08
8 x 8 in / 20 x 20 cm Tapestri WOOL BLEND MATTE PRESSED GLAZED PORCELAIN TILE	200 x 200 mm	9 mm	4500-0980-0	31.11	14.11	17	7.32	0.68	81	592.92	55.08
8.5 in / 21.6 cm Tapestri CASHMERE HEXAGON MATTE PRESSED GLAZED PORCELAIN TILE	215 x 250 mm	9 mm	4500-0981-0	27.13	12.31	17	7.43	0.69	66	490.38	45.54
8.5 in / 21.6 cm Tapestri GREY DENIM HEXAGON MATTE PRESSED GLAZED PORCELAIN TILE	215 x 250 mm	9 mm	4500-0982-0	27.13	12.31	17	7.43	0.69	66	490.38	45.54
8.5 in / 21.6 cm Tapestri SILK HEXAGON MATTE PRESSED GLAZED PORCELAIN TILE	215 x 250 mm	9 mm	4500-0983-0	27.13	12.31	17	7.43	0.69	66	490.38	45.54
8.5 in / 21.6 cm Tapestri WOOL HEXAGON MATTE PRESSED GLAZED PORCELAIN TILE	215 x 250 mm	9 mm	4500-0984-0	27.13	12.31	17	7.43	0.69	66	490.38	45.54
8.5 in / 21.6 cm Tapestri CASHMERE BLEND HEXAGON MATTE PRESSED GLAZED PORCELAIN TILE	215 x 250 mm	9 mm	4500-0985-0	27.13	12.31	17	7.43	0.69	66	490.38	45.54
8.5 in / 21.6 cm Tapestri DENIM BLEND HEXAGON MATTE PRESSED GLAZED PORCELAIN TILE	215 x 250 mm	9 mm	4500-0986-0	27.13	12.31	17	7.43	0.69	66	490.38	45.54
8.5 in / 21.6 cm Tapestri SILK BLEND HEXAGON MATTE PRESSED GLAZED PORCELAIN TILE	215 x 250 mm	9 mm	4500-0987-0	27.13	12.31	17	7.43	0.69	66	490.38	45.54
8.5 in / 21.6 cm Tapestri WOOL BLEND HEXAGON MATTE PRESSED GLAZED PORCELAIN TILE	215 x 250 mm	9 mm	4500-0988-0	27.13	12.31	17	7.43	0.69	66	490.38	45.54

## Technical information

Tile collection performance based on industry standards.

### Technical Information

	WATER ABSORPTION	ANSI / ISO - (%)	< 0.5%
	ABRASION RESISTANCE	ANSI / ISO	CLASS 4
	SCRATCH HARDNESS	ANSI / ISO - (Mohs)	6
	BREAKING STRENGTH	ANSI - (lbf) ISO - (N)	≥310 ≥1300
	SHADE VARIATION		V2
	SLIP RESISTANCE	ANSI - DCOF (WET) ISO - R VALUE	≥0.55 R9
	CHEMICAL RESISTANCE	ANSI / ISO	CLASS A
	STAIN RESISTANCE	ANSI ISO	CLASS A CLASS 5
	FROST RESISTANCE	ANSI / ISO	PASS

Test values are based on ANSI / ISO standards according to: ANSI A137.1 - Porcelain tile P1 Class, ISO 13006 - G - Bia Group, En 14411 - G - Bia Group. Variances in test values can occur in different production lots.

\*Values are estimates and will be confirmed after production.

## Usage recommendation

recommendations for suitable applications.

Usage Recommendations*		MATTE GLAZED PORCELAIN	
APPLICATION		WALL	FLOOR
INTERIOR	RESIDENTIAL	•	•
	COMMERCIAL	•	•
	HEAVY COMMERCIAL	•	
EXTERIOR	RESIDENTIAL / COMMERCIAL	•	

\* These recommendations are not defined by ANSI/ISO standards.

*Credits*

ART DIRECTION  
AND GRAPHIC DESIGN  
Juma



**CONESTOGA**TILE

