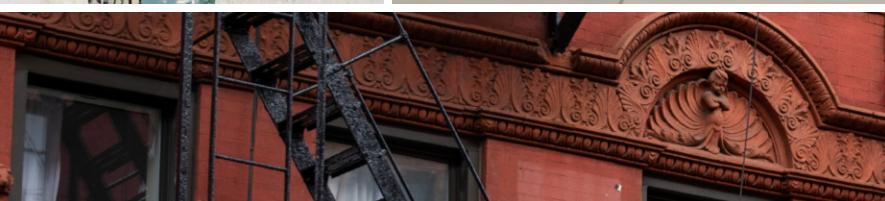


EAST VILLAGE HDP

High Definition Porcelain™

COLOR BODY PORCELAIN FLOOR & WALL TILE



floridatile

EAST VILLAGE HDP

Florida Tile's East Village^{HDP} collection is true to its namesake NYC neighborhood. The creative hotbed of lower Manhattan is beloved for its patented grit and spirited grandeur. A melting pot of artists, actors, musicians, and more, it embodies a rich coming together of social, cultural, and architectural histories that ardently resist the norm. Synonymous with its iconic boutiques, lounges, bookstores, and cafes, East Village^{HDP} celebrates a freethinking aesthetic that pushes boundaries and never ceases to deliver authentic, head-turning style.

This color body porcelain field tile boasts a wide range of rectified formats – 3.75x12, 12x24, 24x24, 24x48 – complemented by a dramatic, oversized waterjet-cut hexagon measuring 22.5x22.5. Transient variations of tone in an artful, washed concrete look are found in each of the five colors: Avenue A Gray, E. Houston Warm Gray, Potter's Red Clay, Stuyvesant Charcoal, and Tompkins Blue/Black. Completing this inspired collection are a bullnose and 36-piece mosaic in each color and two unique, waterjet-cut, tri-colored, pieced hexagon mosaics in both a warm and cool mix.

Manufactured using proprietary HDP—High Definition Porcelain® printing technology, East Village^{HDP} is entirely made in the USA in our Green Squared® certified Advanced Manufacturing Center in Lawrenceburg, KY. It consists of 40% pre-consumer, recycled content and meets the DCOF AcuTest® requirements to be installed in level, wet areas. It is GREENGUARD® and Porcelain Tile certified. Incorporated into the tile surface is Microban® antimicrobial technology that works continuously to inhibit bacteria growth, improve visible cleanliness, and reduce odors.



shown on front: **EVG20 3.75x12 & 24x24** E. Houston Warm Gray
above: **EVG10 24x28** Avenue A Gray, **EVG30 12x24** Potter's Red Clay & **EVG123/M7x7HEX** Warm Mix Hexagon Mosaic

AVENUE A GRAY



EVG10 3.75x12
Avenue A Gray



EVG10 12x24
Avenue A Gray



EVG10 24x24
Avenue A Gray



EVG10 24x48
Avenue A Gray



EVG10 22.5x22.5HEX
Avenue A Gray (waterjet-cut)



EVG10/M122
Avenue A Gray 36pc Mosaic



EVG145/M7x7HEX
Cool Mix Hexagon Mosaic (waterjet-cut)
(Avenue A Gray, Stuyvesant Charcoal
& Tompkins Blue/Black)

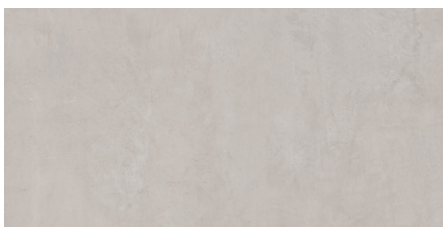


EVG123/M7x7HEX
Warm Mix Hexagon Mosaic (waterjet-cut)
(Avenue A Gray, E. Houston Warm Gray
& Potter's Red Clay)

E. HOUSTON WARM GRAY



EVG20 3.75x12
E. Houston Warm Gray



EVG20 12x24
E. Houston Warm Gray



EVG20 24x24
E. Houston Warm Gray



EVG20 24x48
E. Houston Warm Gray



EVG20 22.5x22.5HEX
E. Houston Warm Gray (waterjet-cut)



EVG20/M122
E. Houston Warm Gray 36pc Mosaic



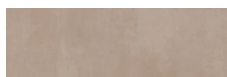
EVG123/M7x7HEX
Warm Mix Hexagon Mosaic (waterjet-cut)
(Avenue A Gray, E. Houston Warm Gray & Potter's Red Clay)



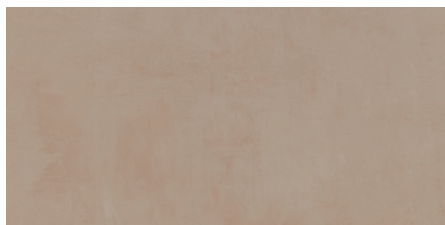


left: **EVG20 3.75x12 & 24x24** E. Houston Warm Gray
 right: **EVG10 22.5x22.5HEX** Avenue A Gray, **EVG20 22.5x22.5HEX** E. Houston Warm Gray, **EVG30 22.5x22.5HEX** Potter's Red Clay & **EVG30 24x48** Potter's Red Clay

POTTER'S RED CLAY



EVG30 3.75x12
Potter's Red Clay



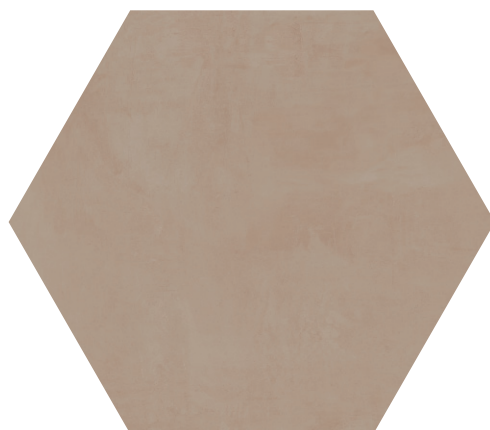
EVG30 12x24
Potter's Red Clay



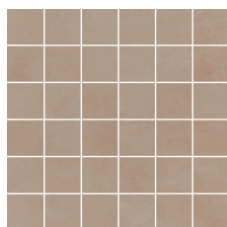
EVG30 24x24
Potter's Red Clay



EVG30 24x48
Potter's Red Clay



EVG30 22.5x22.5HEX
Potter's Red Clay (waterjet-cut)



EVG30/M122
Potter's Red Clay 36pc Mosaic

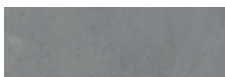


EVG123/M7x7HEX
Warm Mix Hexagon Mosaic (waterjet-cut)
(Avenue A Gray, E. Houston Warm Gray & Potter's Red Clay)

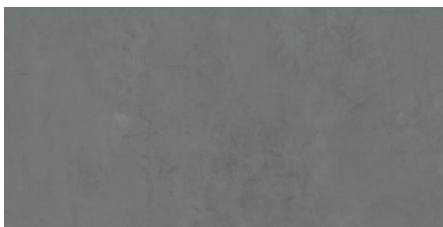


left: **EVG10 22.5x22.5HEX** Avenue A Gray, **EVG20 22.5x22.5HEX** E. Houston Warm Gray, **EVG30 22.5x22.5HEX** Potter's Red Clay & **EVG30 24x48** Potter's Red Clay
right: **EVG10 24x28** Avenue A Gray, **EVG30 12x24** Potter's Red Clay & **EVG123/M7x7HEX** Warm Mix Hexagon Mosaic

STUYVESANT CHARCOAL



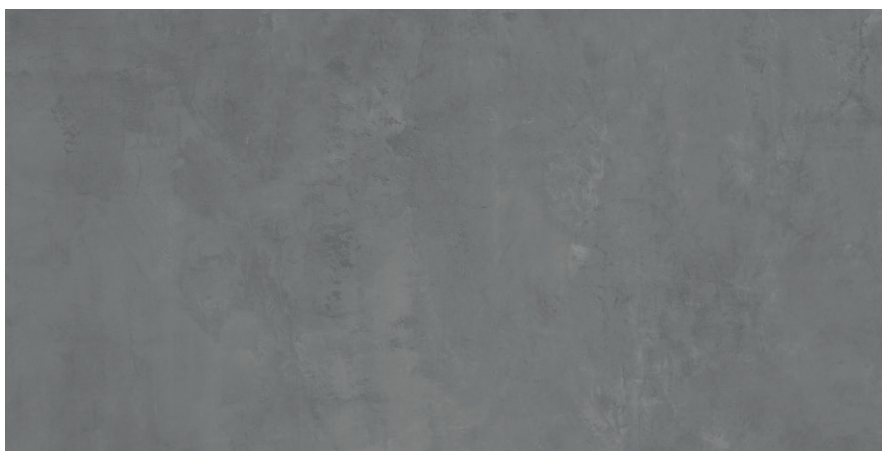
EVG40 3.75x12
Stuyvesant Charcoal



EVG40 12x24
Stuyvesant Charcoal



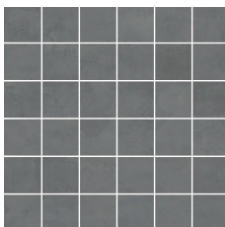
EVG40 24x24
Stuyvesant Charcoal



EVG40 24x48
Stuyvesant Charcoal



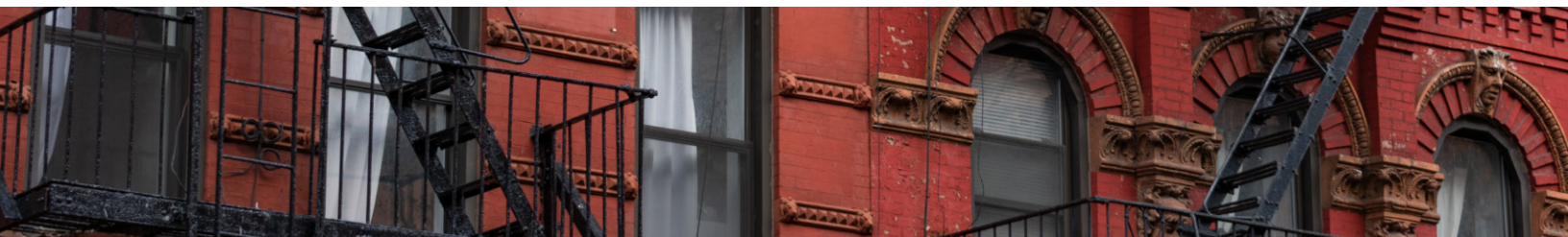
EVG40 22.5x22.5HEX
Stuyvesant Charcoal (waterjet-cut)



EVG40/M122
Stuyvesant Charcoal 36pc Mosaic



EVG145/M7x7HEX
Cool Mix Hexagon Mosaic (waterjet-cut)
(Avenue A Gray, Stuyvesant Charcoal & Tompkins Blue/Black)



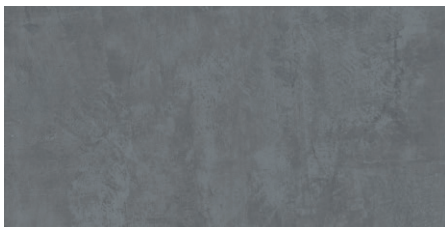


left: **EVG10 22.5x22.5HEX** Avenue A Gray, **EVG40 22.5x22.5HEX** Stuyvesant Charcoal, **EVG50 22.5x22.5HEX** Tompkins Blue/Black, **EVG40 24x24** Stuyvesant Charcoal & **EVG50 12x24** Tompkins Blue/Black
right: **EVG10 12x24** Avenue A Gray, **EVG40 3.75x12** Stuyvesant Charcoal & **EVG145/M7x7HEX** Cool Mix Hexagon Mosaic

TOMPKINS BLUE/BLACK



EVG50 3.75x12
Tompkins Blue/Black



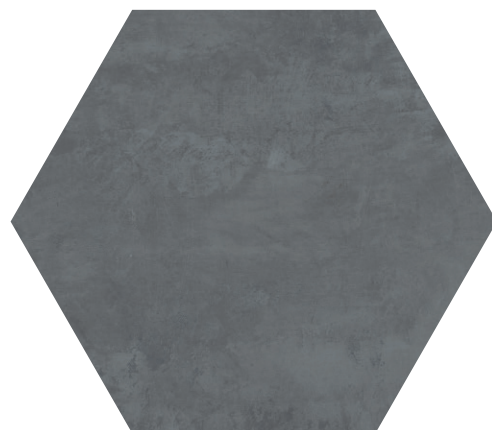
EVG50 12x24
Tompkins Blue/Black



EVG50 24x24
Tompkins Blue/Black



EVG50 24x48
Tompkins Blue/Black



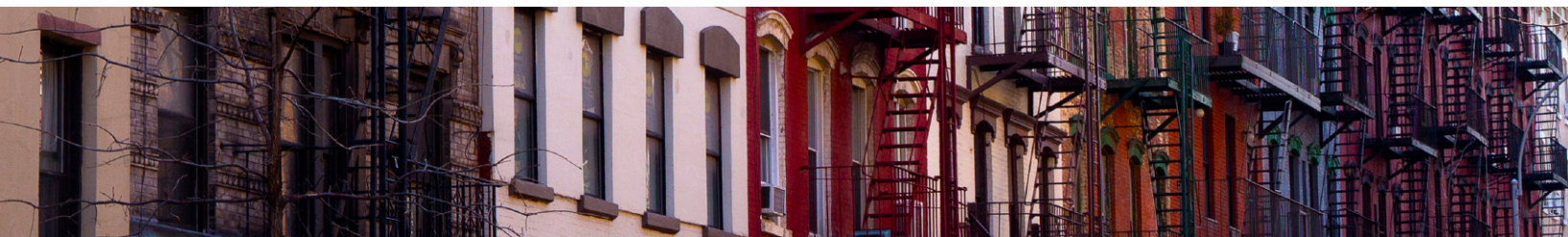
EVG50 22.5x22.5HEX
Tompkins Blue/Black (waterjet-cut)



EVG50/M122
Tompkins Blue/Black 36pc Mosaic



EVG145/M7x7HEX
Cool Mix Hexagon Mosaic (waterjet-cut)
(Avenue A Gray, Stuyvesant Charcoal & Tompkins Blue/Black)





left: **EVG10 22.5x22.5HEX** Avenue A Gray, **EVG40 22.5x22.5HEX** Stuyvesant Charcoal, **EVG50 22.5x22.5HEX** Tompkins Blue/Black, **EVG40 24x24** Stuyvesant Charcoal & **EVG50 12x24** Tompkins Blue/Black
right: **EVG10 12x24** Avenue A Gray & **EVG145/M7x7HEX** Cool Mix Hexagon Mosaic

EAST VILLAGE HDP

High Definition Porcelain™

PROTECTION THAT LIVES ON
MICROBAN®



above: **EVG10 22.5x22.5HEX** Avenue A Gray, **EVG20 22.5x22.5HEX** E. Houston Warm Gray, **EVG30 22.5x22.5HEX** Potter's Red Clay, **EVG30 24x48** Potter's Red Clay & **EVG10 12x24** Avenue A Gray

Porcelain Technical Data Properties (Floor)	ASTM®	ANSI®	Results¹
DCOF AcuTest®²	A137.1	≥ 0.42	Pass
Surface Hardness	Mohs Scale	N/A	7 Mohs
Break Strength	C-648	≥ 250 lbf.	≥ 410 lbf. avg.
Water Absorption	C-373	≤ 0.5%	≤ 0.5%³
Intended Use⁴	N/A	N/A	Residential Light Commercial Heavy Commercial

¹ Values are offered in good faith as being accurate and typical of normal production. Due to the natural variation of raw materials and manufacturing processes, the values of the purchased product for any particular installation may vary.

² ANSI® A137.1 standard, ceramic tiles selected for level interior spaces expected to be walked upon when wet must have a minimum wet DCOF AcuTest® value of 0.42.

³ Average production value.

⁴ Please visit www.floridatile.com/intended-use for further details.

Typical Uses

East Village^{HDP} color body porcelain floor and wall tile is appropriate for residential and commercial wall, countertop, backsplash, and most floor applications.

Notice: Not all flooring products are suitable for wet areas, specialized applications, or commercial use. Please refer to the American National Standard Specifications for Ceramic Tile (ANSI® A137.1) for ceramic, stone, and glass installation for specific usage and installation information.

This Florida Tile product will contribute to USGBC LEED® points and the ANSI® approved NAHB® Green Building Points.

Color, texture, and finish variations may occur due to the nature of the product.

Color reproductions in this printed piece may vary from actual tile colors. Final selection should be made from actual tile samples.

Field Tile Nominal Size (in)¹	Metric (cm)	Pcs./Sq Ft²	Thickness³	Edge
3.75x12	9.5x30	3.26	10mm	Rectified
12x24	30x60	.5	10mm	Rectified
24x24	60x60	.25	10mm	Rectified
24x48	60x122	.129	10mm	Rectified
22.5x22.5HEX*	58x58	.38	10mm	Waterjet-Cut

¹ These values may vary from lot to lot.

² These values are based on actual sizes including the grout joint.

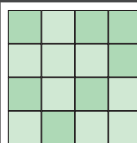
³ May not apply to textured surfaces or tiles with uneven back patterns such as mesh mounted mosaics.

* For specific sizes, please refer to the Technical Data Sheet by visiting www.floridatile.com.

Trim	Shape	Sku	Nominal Size (in)¹	Metric (cm)
Bullnose		P43N9	3x24	7.5x60

¹ These values may vary from lot to lot.

Color Variation



V2 Slight Variation

Clearly distinguishable differences in texture and/or pattern with similar colors.

Hexagon Mosaic Notice

Each M7x7Hex mosaic (waterjet-cut) is sold (6) pieces to a carton in a mixed assortment of A, B, and C layouts. Total coverage per carton is 5.12 SQFT.

