

# OPUS STONE



# OPUS STONE

Collezione dalle caratteristiche tradizionali ma essenzialmente sobrie, che conferiscono agli ambienti uno stile trasversale senza tempo. Nuance stonalizzate, che si abbinano perfettamente alle linee moderne degli arredi per ambienti sofisticati e accoglienti. Opus Stone, unico nel suo genere.



# AVORIO



**pavimento**  
Composizione  
Avorio

**rivestimento**  
Avorio 20,3x20,3











**pavimento**  
Composizione  
Avorio

**rivestimento**  
Avorio 20,3x20,3





# GRIGIO



**pavimento**  
Grigio 20,3x20,3

**rivestimento**  
Mosaico Grigio 5x5  
Decoro Grigio / Avorio  
20,3x20,3















**pavimento**  
Grigio 20,3x20,3

**rivestimento**  
Mosaico Grigio 5x5  
Decoro Grigio / Avorio  
20,3x20,3



# BEIGE



**pavimento**  
Composizione  
Beige













**BEIGE**

**pavimento**  
Composizione  
Beige



# TORTORA



**pavimento**  
Composizione  
Tortora

**rivestimento**  
Decoro Beige / Tortora  
20,3x20,3













# TORTORA



**pavimento**  
Composizione  
Tortora

**rivestimento**  
Decoro Beige / Tortora  
20,3x20,3





# BLU



**pavimento**  
Blu 40,8x61,4

**rivestimento**  
Blu 20,3x40,8











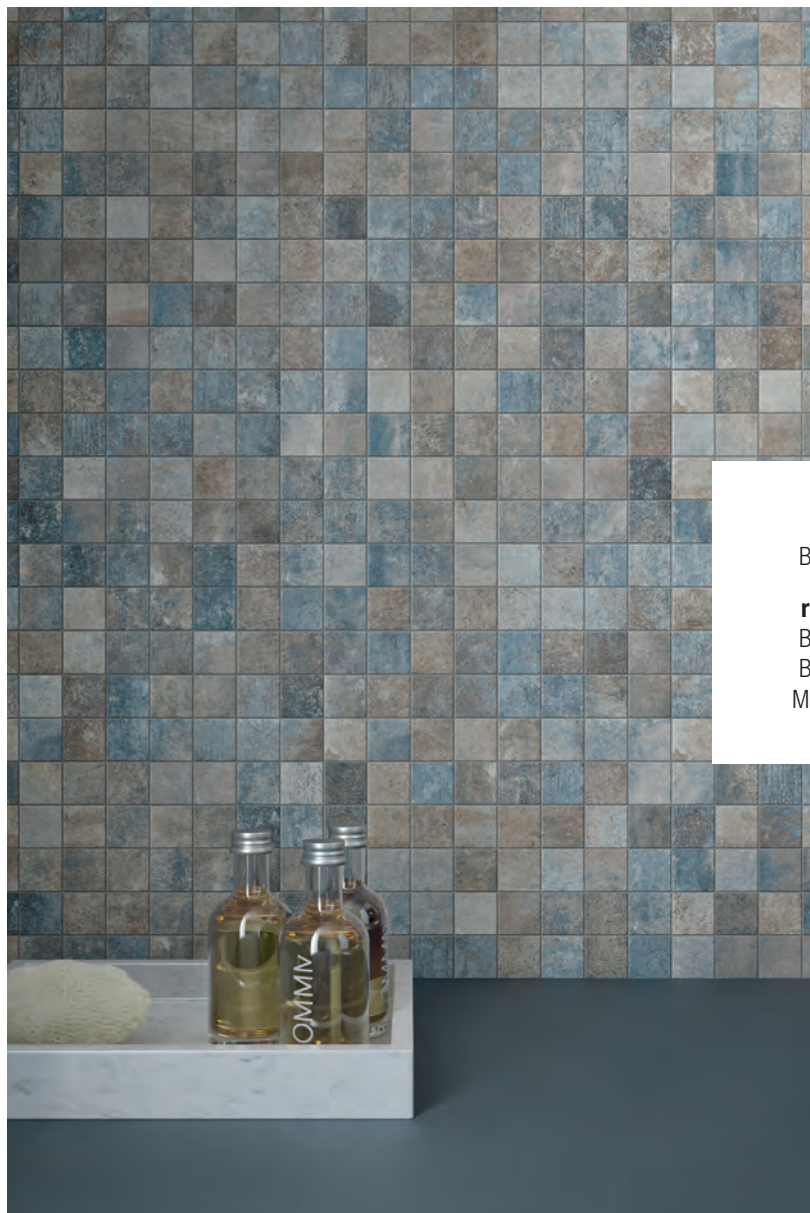
**pavimento**  
Blu 40,8x61,4

**rivestimento**  
Blu 20,3x40,8



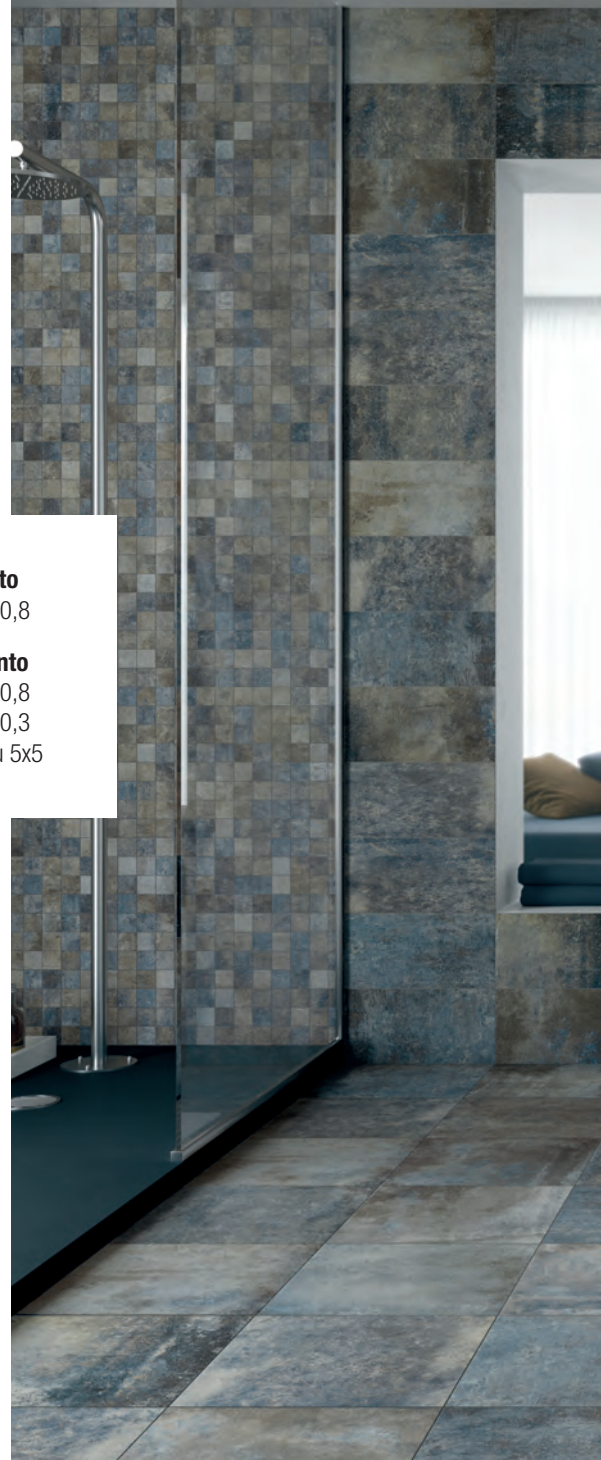


# BLU



**pavimento**  
Blu 40,8x40,8

**rivestimento**  
Blu 20,3x40,8  
Blu 10,3x20,3  
Mosaico Blu 5x5















**pavimento**  
Blu 40,8x40,8

**rivestimento**  
Blu 20,3x40,8  
Blu 10,3x20,3  
Mosaico Blu 5x5



# AVORIO

# OPUS STONE



**406009**  
OPUS STONE  
AVORIO NATURALE  
40,8x61,4 / 16,05"x24,15"  
Cod. **70** □

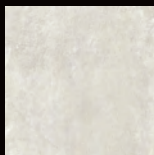


**406024**  
OPUS STONE  
AVORIO NATURALE R11  
40,8x61,4 / 16,05"x24,15"  
Cod. **75** □

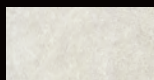
**404009**  
OPUS STONE  
AVORIO NATURALE  
40,8x40,8 / 16,05"x16,05"  
Cod. **71** □



**204006**  
OPUS STONE  
AVORIO NATURALE  
20,3x40,8 / 8"x16,05"  
Cod. **78** □



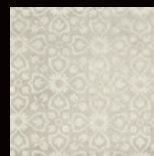
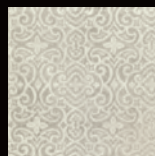
**130071**  
OPUS STONE  
AVORIO NATURALE  
20,3x20,3 / 8"x8"  
Cod. **96** □



**103108**  
OPUS STONE  
AVORIO NATURALE  
10,3x20,3 / 4,05"x8"  
Cod. **88** □



**041195**  
OPUS STONE  
AVORIO NATURALE  
MOSAICO 5x5  
SU RETE 30x30 / 12"x12"  
Cod. **26** ○



**130077**  
OPUS STONE DECORO GRIGIO / AVORIO 20,3x20,3 / 8"x8"  
Cod. **104** □







# GRIGIO

# OPUS STONE

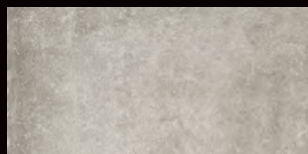


**406018**  
OPUS STONE  
GRIGIO NATURALE  
40,8x61,4 / 16,05"x24,15"  
Cod. **70** □



**406033**  
OPUS STONE  
GRIGIO NATURALE R11  
40,8x61,4 / 16,05"x24,15"  
Cod. **75** □

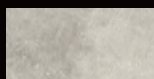
**404012**  
OPUS STONE  
GRIGIO NATURALE  
40,8x40,8 / 16,05"x16,05"  
Cod. **71** □



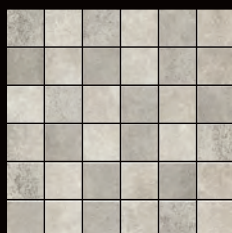
**204009**  
OPUS STONE  
GRIGIO NATURALE  
20,3x40,8 / 8"x16,05"  
Cod. **78** □



**130074**  
OPUS STONE  
GRIGIO NATURALE  
20,3x20,3 / 8"x8"  
Cod. **96** □



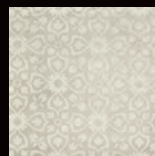
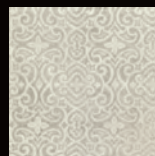
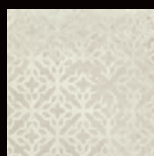
**103111**  
OPUS STONE  
GRIGIO NATURALE  
10,3x20,3 / 4,05"x8"  
Cod. **88** □



**041198**  
OPUS STONE  
GRIGIO NATURALE  
MOSAICO 5x5  
SU RETE 30x30 / 12"x12"  
Cod. **26** ○



**130077**  
OPUS STONE DECORO GRIGIO / AVORIO 20,3x20,3 / 8"x8"  
Cod. **104** □







# BEIGE

# OPUS STONE

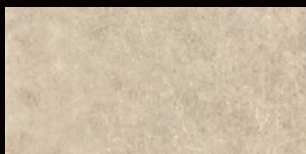


**406012**  
OPUS STONE  
BEIGE NATURALE R11  
40,8x61,4 / 16,05"x24,15"  
Cod. **70** □



**404010**  
OPUS STONE  
BEIGE NATURALE  
40,8x40,8 / 16,05"x16,05"  
Cod. **71** □

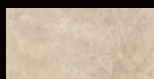
**406027**  
OPUS STONE  
BEIGE NATURALE R11  
40,8x61,4 / 16,05"x24,15"  
Cod. **75** □



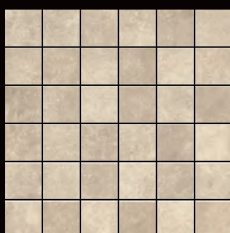
**204007**  
OPUS STONE  
BEIGE NATURALE  
20,3x40,8 / 8"x16,05"  
Cod. **78** □



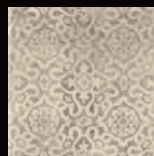
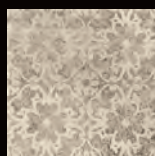
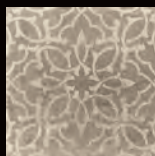
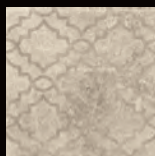
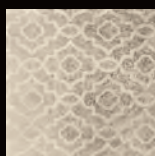
**130072**  
OPUS STONE  
BEIGE NATURALE  
20,3x20,3 / 8"x8"  
Cod. **96** □



**103109**  
OPUS STONE  
BEIGE NATURALE  
10,3x20,3 / 4,05"x8"  
Cod. **88** □



**041196**  
OPUS STONE  
BEIGE NATURALE  
MOSAICO 5x5  
SU RETE 30x30 / 12"x12"  
Cod. **26** ○



**130078**  
OPUS STONE DECORO BEIGE / TORTORA 20,3x20,3 / 8"x8"  
Cod. **104** □





# TORTORA

# OPUS STONE

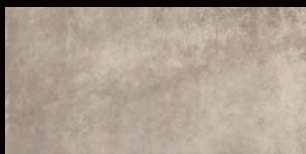


**406021**  
OPUS STONE  
TORTORA NATURALE  
40,8x61,4 / 16,05"x24,15"  
Cod. **70** □



**406036**  
OPUS STONE  
TORTORA NATURALE R11  
40,8x61,4 / 16,05"x24,15"  
Cod. **75** □

**404013**  
OPUS STONE  
TORTORA NATURALE  
40,8x40,8 / 16,05"x16,05"  
Cod. **71** □



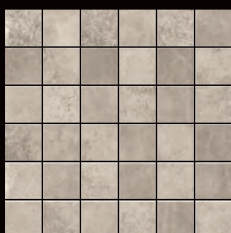
**204010**  
OPUS STONE  
TORTORA NATURALE  
20,3x40,8 / 8"x16,05"  
Cod. **78** □



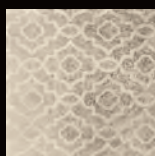
**130075**  
OPUS STONE TORTORA  
NATURALE  
20,3x20,3 / 8"x8"  
Cod. **96** □



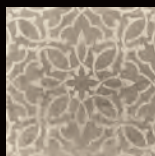
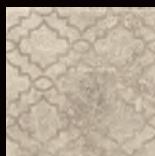
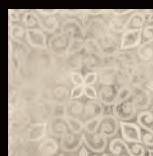
**103112**  
OPUS STONE  
TORTORA NATURALE  
10,3x20,3 / 4,05"x8"  
Cod. **88** □



**041199**  
OPUS STONE  
TORTORA NATURALE  
MOSAICO 5x5  
SU RETE 30x30 / 12"x12"  
Cod. **26** ○



**130078**  
OPUS STONE DECORO BEIGE / TORTORA 20,3x20,3 / 8"x8"  
Cod. **104** □







# BLU

# OPUS STONE



**406015**  
OPUS STONE  
BLU NATURALE  
40,8x61,4 / 16,05"x24,15"  
Cod. **70** □



**406030**  
OPUS STONE  
BLU NATURALE **R11**  
40,8x61,4 / 16,05"x24,15"  
Cod. **75** □



**204008**  
OPUS STONE  
BLU NATURALE  
20,3x40,8 / 8"x16,05"  
Cod. **78** □



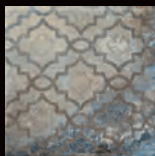
**130073**  
OPUS STONE BLU  
NATURALE  
20,3x20,3 / 8"x8"  
Cod. **104** □



**103110**  
OPUS STONE  
BLU NATURALE  
10,3x20,3 / 4,05"x8"  
Cod. **88** □



**041197**  
OPUS STONE  
BLU NATURALE  
MOSAICO 5x5  
SU RETE 30x30 / 12"x12"  
Cod. **26** ○



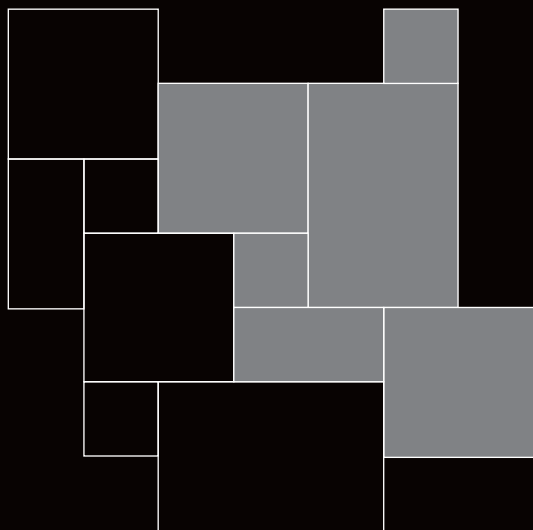
**130076**  
OPUS STONE DECORO BLU 20,3x20,3 / 8"x8"  
Cod. **104** □







## SUGGERIMENTI DI POSA • LAYING PROPOSALS • SOLUTIONS DE POSE • VERLEGEVORSCHÄGE



40,8 x 61,4....33,46 %  
40,8 x 40,8....44,47 %  
20,3 x 40,8....11,06 %  
20,3 x 20,3....11,01 %

**406040**  
OPUS STONE AVORIO NATURALE  
MIX BOX  
Cod. **120** □

**406043**  
OPUS STONE GRIGIO NATURALE  
MIX BOX  
Cod. **120** □

**406041**  
OPUS STONE BEIGE NATURALE  
MIX BOX  
Cod. **120** □

**406039**  
OPUS STONE TORTORA NATURALE  
MIX BOX  
Cod. **120** □

**406042**  
OPUS STONE BLU NATURALE  
MIX BOX  
Cod. **120** □

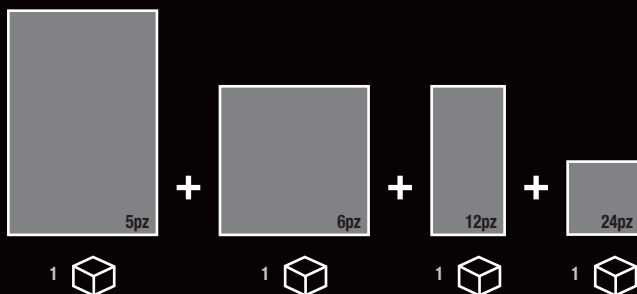
**406048**  
OPUS STONE AVORIO NATURALE  
MIX BOX **R11**  
Cod. **79** □

**406051**  
OPUS STONE GRIGIO NATURALE  
MIX BOX **R11**  
Cod. **79** □

**406049**  
OPUS STONE BEIGE NATURALE  
MIX BOX **R11**  
Cod. **79** □

**406047**  
OPUS STONE TORTORA NATURALE  
MIX BOX **R11**  
Cod. **79** □

**406050**  
OPUS STONE BLU NATURALE  
MIX BOX **R11**  
Cod. **79** □



40,8 x 61,4....33,46 %  
40,8 x 40,8....44,47 %  
20,3 x 40,8....11,06 %  
20,3 x 20,3....11,01 %

**600162**  
OPUS STONE AVORIO  
COMPO 1  
Cod. **117** □

**600165**  
OPUS STONE GRIGIO NATURALE  
COMPO 1  
Cod. **117** □

**600163**  
OPUS STONE BEIGE NATURALE  
COMPO 1  
Cod. **117** □

**600166**  
OPUS STONE TORTORA NATURALE  
COMPO 1  
Cod. **117** □

**600164**  
OPUS STONE BLU NATURALE  
COMPO 1  
Cod. **117** □

Ceramica Gazzini S.p.A. garantisce l'abbinamento dei calibri per la posa in multiformato solo ed esclusivamente per il pattern qui raffigurato, mentre si solleva da ogni responsabilità qualora si adottasse uno schema di posa che si discosta da questo, in quanto potrebbe non assicurare un accostamento ottimale.

Ceramica Gazzini S.p.A. garantiert die Kombination der Kaliber für die Verlegung in Verband/Compo ausschließlich für das hier gezeigte Pattern. Ceramica Gazzini S.p.A. übernimmt keine Verantwortung, wenn andere Verlegungsschemen angewendet werden, da diese keine optimale Kombination gewährleisten könnten.

Caliber matching in multiformat laying is guaranteed by Ceramica Gazzini S.p.A. only and exclusively for the here shown pattern; Ceramica Gazzini S.p.A. is released from all liabilities in case of adoption of different patterns, as that does not ensure the optimal combination.

Ceramica Gazzini S.p.A. garantit la combinaison des calibres seulement pour le schéma multiformat indiqué sur le catalogue, Gazzini en aucun cas sera responsable de l'utilisation de schéma de pose différents.



PEZZI SPECIALI • SPECIAL TRIMS • PIÈCES SPÉCIALES • FORMSTÜCKE

□ = mq    ○ = pz    △ = ml

## BATTISCOPA



**290728**  
OPUS STONE AVORIO BATTISCOPA  
6,2x40,8 / 2,45"x16,05"  
Cod. **121** △

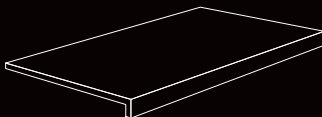
**290731**  
OPUS STONE GRIGIO BATTISCOPA  
6,2x40,8 / 2,45"x16,05"  
Cod. **121** △

**290729**  
OPUS STONE BEIGE BATTISCOPA  
6,2x40,8 / 2,45"x16,05"  
Cod. **121** △

**290732**  
OPUS STONE TORTORA BATTISCOPA  
6,2x40,8 / 2,45"x16,05"  
Cod. **121** △

**290730**  
OPUS STONE BLU BATTISCOPA  
6,2x40,8 / 2,45"x16,05"  
Cod. **121** △

## LINEARE A ELLE



**490651**  
OPUS STONE AVORIO LINEARE A ELLE  
33x61,4 / 13,00"x24,15"  
Cod. **111** ○

**490654**  
OPUS STONE GRIGIO LINEARE A ELLE  
33x61,4 / 13,00"x24,15"  
Cod. **111** ○

**490652**  
OPUS STONE BEIGE LINEARE A ELLE  
33x61,4 / 13,00"x24,15"  
Cod. **111** ○

**490655**  
OPUS STONE TORTORA LINEARE A ELLE  
33x61,4 / 13,00"x24,15"  
Cod. **111** ○

**490653**  
OPUS STONE BLU LINEARE A ELLE  
33x61,4 / 13,00"x24,15"  
Cod. **111** ○

## ANGOLARE A ELLE



**490656**  
OPUS STONE AVORIO ANGOLARE A ELLE  
33x61,4 / 13,00"x24,15"  
Cod. **112** ○

**490659**  
OPUS STONE GRIGIO ANGOLARE A ELLE  
33x61,4 / 13,00"x24,15"  
Cod. **112** ○

**490657**  
OPUS STONE BEIGE ANGOLARE A ELLE  
33x61,4 / 13,00"x24,15"  
Cod. **112** ○

**490660**  
OPUS STONE TORTORA ANGOLARE A ELLE  
33x61,4 / 13,00"x24,15"  
Cod. **112** ○

**490658**  
OPUS STONE BLU ANGOLARE A ELLE  
33x61,4 / 13,00"x24,15"  
Cod. **112** ○



### CERAMICA GAZZINI E L'AMBIENTE

In accordo con la norma ISO 1402 "Environmental labels and declarations" si dichiara che: L'azienda è impegnata nella continua innovazione tecnologica dei propri processi per realizzare prodotti sempre più rispondenti alle richieste del mercato e nell'ottica di:

- riduzione del consumo energetico dei processi di produzione;
  - riduzione delle emissioni nell'aria e nell'acqua;
  - miglioramento dell'informazione al consumatore e della gestione dei rifiuti.
- Per limitare il proprio impatto ambientale CERAMICA GAZZINI S.p.A. opera come di seguito descritto:
- gli scarti di lavorazione sono completamente gestiti e riutilizzati;
  - tutti gli stabilimenti produttivi sono dotati di impianto di depurazione delle acque a circuito chiuso con recupero totale degli scarichi idrici provenienti dal ciclo produttivo e nessuno scarico in ambiente;
  - le emissioni gassose sono autorizzate dall'autorità competente, dotate di impianti per l'abbattimento degli inquinanti e sottoposte a controllo periodico per verifica del rispetto della legislazione vigente;
  - i rifiuti industriali sono smaltiti in conformità alle direttive comunitarie;
  - gli imballaggi sono destinati al recupero e riutilizzati;
  - l'impatto acustico nell'ambiente è attenuato con l'utilizzo di tecnologie idonee.

Le piastrelle ceramiche prodotte sono:

- un prodotto con una lunga durata di vita
- riciclabili al termine dell'utilizzo

### CERAMICA GAZZINI AND THE ENVIRONMENT

In line with the ISO 14021 standard "Environmental labels and declarations" we declare that: The company is committed to the continued technological innovation of its processes to create products that increasingly meet the demands of the market and focus on:

- reduced energy consumption in production processes;
  - reduced emissions into the air and water;
  - improving consumer awareness and waste management.
- To curb its environmental impact, CERAMICA GAZZINI S.p.A. has taken the following steps:
- manufacturing rejects are fully managed and reused;
  - all the production units are equipped with a closed-circuit water purification plant with total recovery of liquid discharges coming from the production cycle and no discharges into the environment;
  - emissions of gases are authorised by the competent authority, pollutant abatement systems are fitted and undergo periodic checks to verify they comply with the current laws;
  - industrial waste is disposed of in compliance with the community directives;
  - packaging is sent off to be recycled and reused;
  - the acoustic impact on the environment is toned down via the use of suitable technologies.

The ceramic tiles produced are:

- a long-lasting product
- recyclable at the end of their use



I decori 20,3x20,3 sono imballati "random" e non sono acquistabili selezionando singoli motivi fra i 12 che compongono il "pattern".

The 20,3x20,3 decorations are packed "random" and cannot be purchased by selecting single faces among the 12 that make up the "pattern".

Die 12 Dekore 20,3x20,3 werden "random" verpackt und einzelne Motive, aus denen das „Pattern“ besteht, können nicht gekauft werden.

Les décorations 20,3x20,3 sont emballées "de manière aléatoire" et ne peuvent pas être achetées en sélectionnant des motifs uniques parmi les 12 constituant le "motif".





I decori 20,3x20,3 sono imballati "random" e non sono acquistabili selezionando singoli motivi fra i 12 che compongono il "pattern".

The 20,3x20,3 decorations are packed "random" and cannot be purchased by selecting single faces among the 12 that make up the "pattern".

Die 12 Dekore 20,3x20,3 werden "random" verpackt und einzelne Motive, aus denen das „Pattern“ besteht, können nicht gekauft werden.

Les décorations 20,3x20,3 sont emballées "de manière aléatoire" et ne peuvent pas être achetées en sélectionnant des motifs uniques parmi les 12 constituant le "motif".



I decori 20,3x20,3 sono imballati "random" e non sono acquistabili selezionando singoli motivi fra i 12 che compongono il "pattern".

The 20,3x20,3 decorations are packed "random" and cannot be purchased by selecting single faces among the 12 that make up the "pattern".

Die 12 Dekore 20,3x20,3 werden "random" verpackt und einzelne Motive, aus denen das „Pattern“ besteht, können nicht gekauft werden.

Les décorations 20,3x20,3 sont emballées "de manière aléatoire" et ne peuvent pas être achetées en sélectionnant des motifs uniques parmi les 12 constituant le "motif".













CARATTERISTICHE DI QUALITÀ  
 QUALITY CHARACTERISTICS  
 CARACTÉRISTIQUES DE QUALITÉ  
 QUALITÄTSEIGENSCHAFTEN

NORMA  
 NORM  
 NORME  
 NORME

REQUISITO NORMA  
 REQUIRED STANDARDS  
 VALEUR PRESCRITE SELON LA NORME  
 NORMVORGABE

RISULTATO  
 RESULT  
 RÉSULTAT  
 ERGEBNISS

	Assorbimento d'acqua Water absorption of the body Absorption d'eau de support Wasseraufnahme des Scherbens	ISO 10545-3	≤ 0,5	Conforme Conformity Conforme Gemäss
	Resistenza a flessione Breaking strenght Résistance à la flexion Biegefestigkeit	ISO 10545-4	≥ 35 N/mm²	Conforme Conformity Conforme Gemäss
	Resistenza al gelo Frost resistance Résistance au gel Frostbeständigkeit	ISO 10545-12	Nessun campione deve presentare rotture o alterazioni apprezzabili alla superficie No samples must show ruptures or noticeable surface alteration Aucuns enchanctions doit présenter ruptures ou altérations appréciables de la surface Keines der Muster sollte Risse oder sichtbare Fehler der Oberflaeche zeigen	Conforme Conformity Conforme Gemäss
	Resistenza all'attacco chimico Chemical resistance Résistance à l'attaque chimique Beständigkeit gegen Chemikalien	ISO 10545-13		GA GLA
	Resistenza agli sbalzi termici Thermal shock resistance Resistance aux ecart de température Temperaturwechselbeständigkeit	ISO 10545-5		Conforme Conformity Conforme Gemäss
	Resistenza all'abrasione Abrasion resistance Resistance a l'abrasion Abriebbestaendigkeit	EN ISO 10545-7		PEI V
	Resistenza all'abrasione Abrasion resistance Resistance a l'abrasion Abriebbestaendigkeit	DIN 51130 R	OPUS STONE NATURALE	R10
			OPUS STONE NATURALE R11	R11
	Resistenza scivolosità Sliding resistance Resistance au glissement Rutschfestigkeit	DIN 51097 R (A+B+C)	OPUS STONE NATURALE	A+B
			OPUS STONE NATURALE R11	A+B+C
	Coefficiente d'attrito dinamico Wet dynamic coefficient of friction Coefficient de friction dynamique Reibungskoeffizient schlüpfrigkeit (in bewegung)	Boot 3000 E	DCOF ≥ 0,42	> 0,42
	Moderata Variazione Moderate Variation Variation modérée maessige Abweichung			V3



V1

Aspetto uniforme  
Uniform appearance  
Aspect uniforme  
einheitliches Aussehen



V2

Lieve Variazione  
Slight Variation  
Légère Variation  
geringe Abweichung



V3

Moderata Variazione  
Moderate Variation  
Variation modérée  
maessige Abweichung



V4

Forte stonallizzazione  
Substantial Variation  
Effet dénuancé très accentué  
akzentuierte Variation

**PER UNA POSA OTTIMALE DEL PRODOTTO CONSIGLIAMO SEMPRE DI MESCOLARE ALMENO TRE SCATOLE DI MATERIALE.**

For the best product laying results, material from at least three boxes should be mixed.

Für eine optimale Verlegung des Erzeugnisses empfehlen wir stets, mindestens drei Packungen Material anzumischen.

Pour une pose excellente, nous recommandons toujours de mélanger le contenu d'au moins trois boîtes.

MADE IN ITALY



GAZZINI  
CERAMICA & DESIGN

Ceramica Gazzini SpA - via Milano, 2 - 42048 Rubiera (Reggio Emilia) Italy  
Tel. 0522 628112 - 627518 - 628639 - Fax 0522 628437  
info@ceramicagazzini.it - www.ceramicagazzini.it

C.F. E P.I. 00140380353 - REG. IMP. REGGIO EMILIA N° 00140380353  
CAPITALE SOCIALE I.V. € 546.000,00

