





# JEWELLED MOSAICS



Dolomite - Saint Paul  
6 3/8" x 12 3/8" (18157)



Nero Marquina - Saint Paul  
6 3/8" x 12 3/8" (18158)



Tunisian Grey - Saint Paul  
6 3/8" x 12 3/8" (18159)



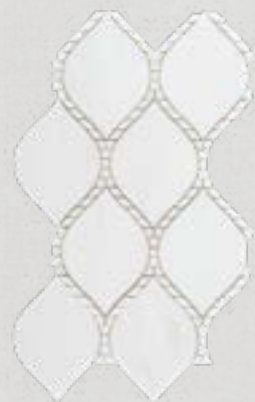
Dolomite - Olympia  
9 3/4" x 11" (18160)



Nero Marquina - Olympia  
9 3/4" x 11" (18161)



Tunisian Grey - Olympia  
9 3/4" x 11" (18162)



Dolomite - Baton Rouge  
8 1/8" x 14 3/4" (18163)

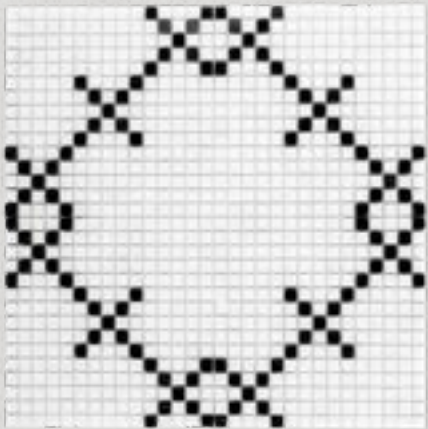


Nero Marquina - Baton Rouge  
8 1/8" x 14 3/4" (18164)



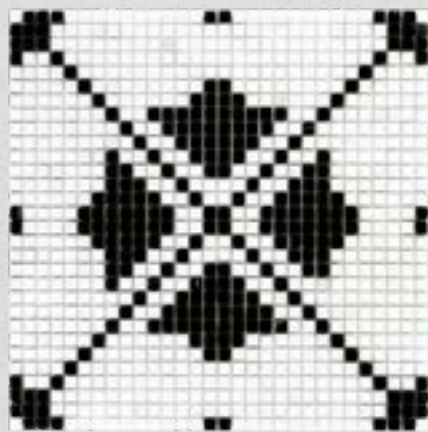
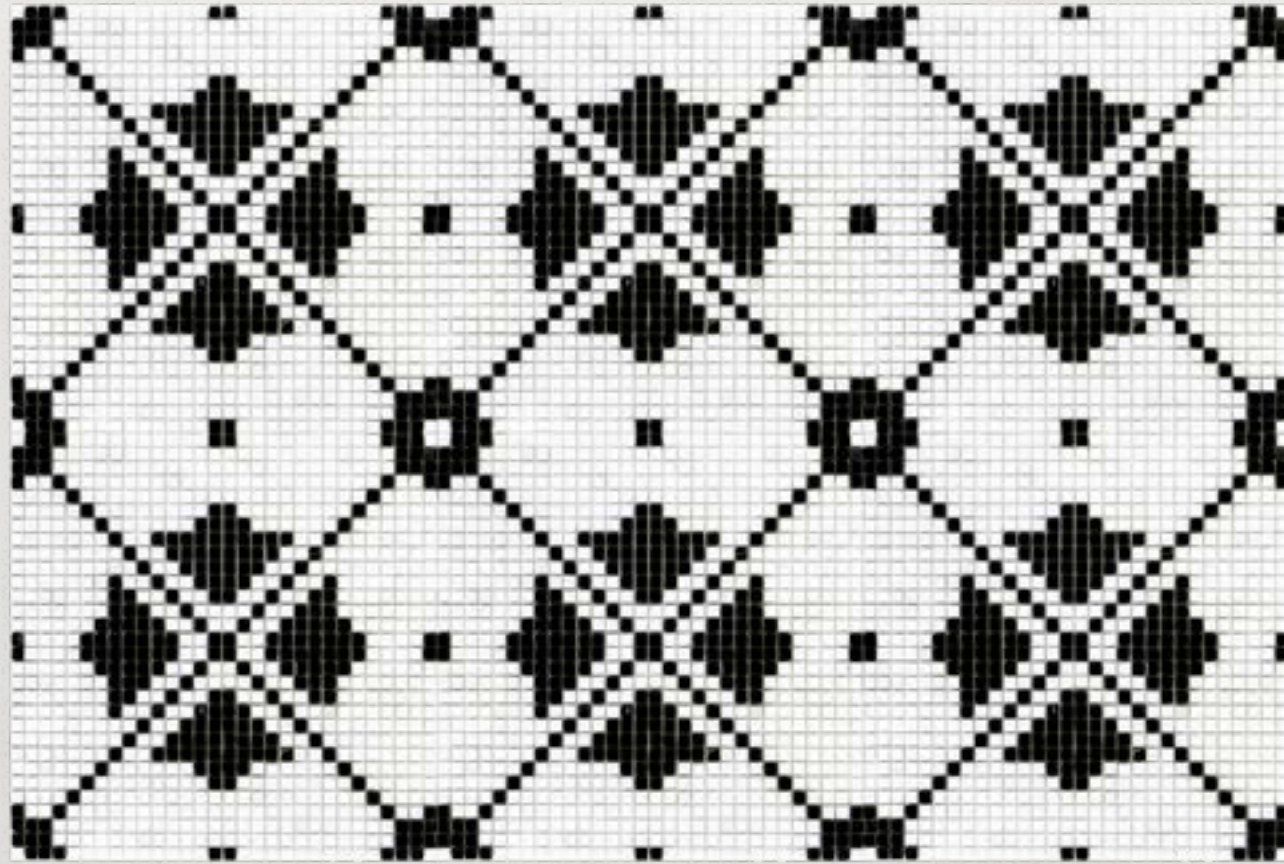
Tunisian Grey - Baton Rouge  
8 1/8" x 14 3/4" (18165)





Nero Marquina - 12 5/8" x 12 5/8" (18166)

Tunisian Grey - 12 5/8" x 12 5/8" (18167)



Nero Marquina - 12 5/8" x 12 5/8" (18168)



Tunisian Grey - 12 5/8" x 12 5/8" (18169)





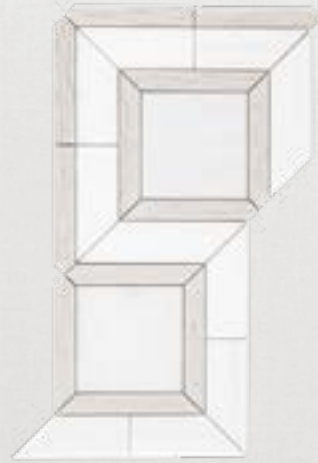
Nero Marquina - 10" x 12 5/8" (18170)



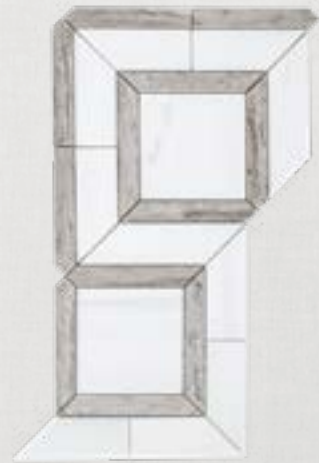
Tunisian Grey - 10" x 12 5/8" (18171)



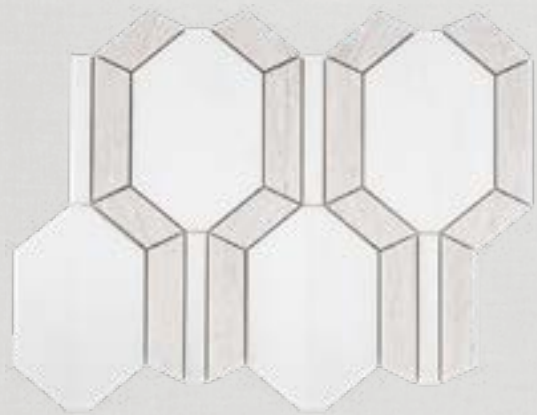
# STONE & PORCELAIN MOSAICS



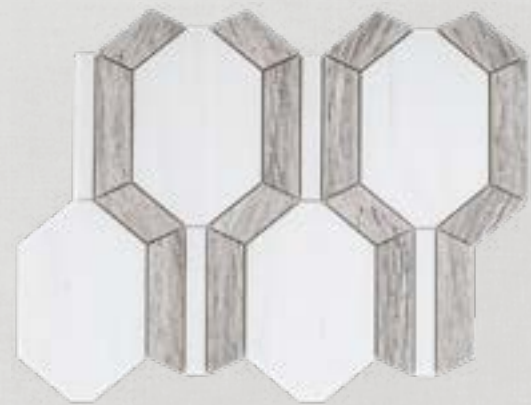
Beige - Hartford  
9 1/4" x 12 3/8" (18172)



Grey - Hartford  
9 1/4" x 12 3/8" (18173)



Beige - Montgomery  
10" x 13" (18174)



Grey - Montgomery  
10" x 13" (18175)

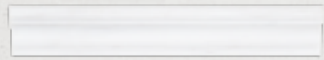




# HONED DOLOMITE



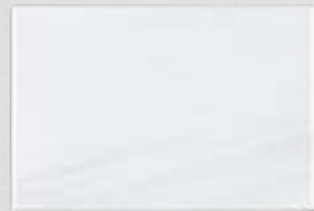
Dome - 3/4" x 12" (18125)



Crown - 1 7/8" x 12" (18126)



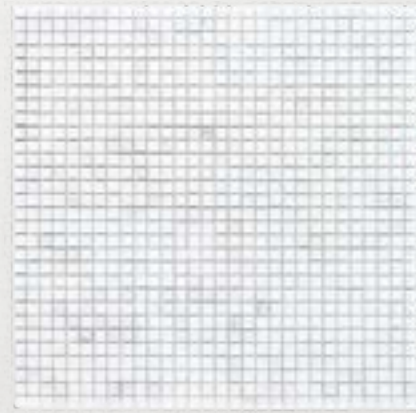
Field - 3" x 10" (18127)



Field - 8" x 12" (18128)



Hexagon Field - 5" x 5 7/8" (18129)



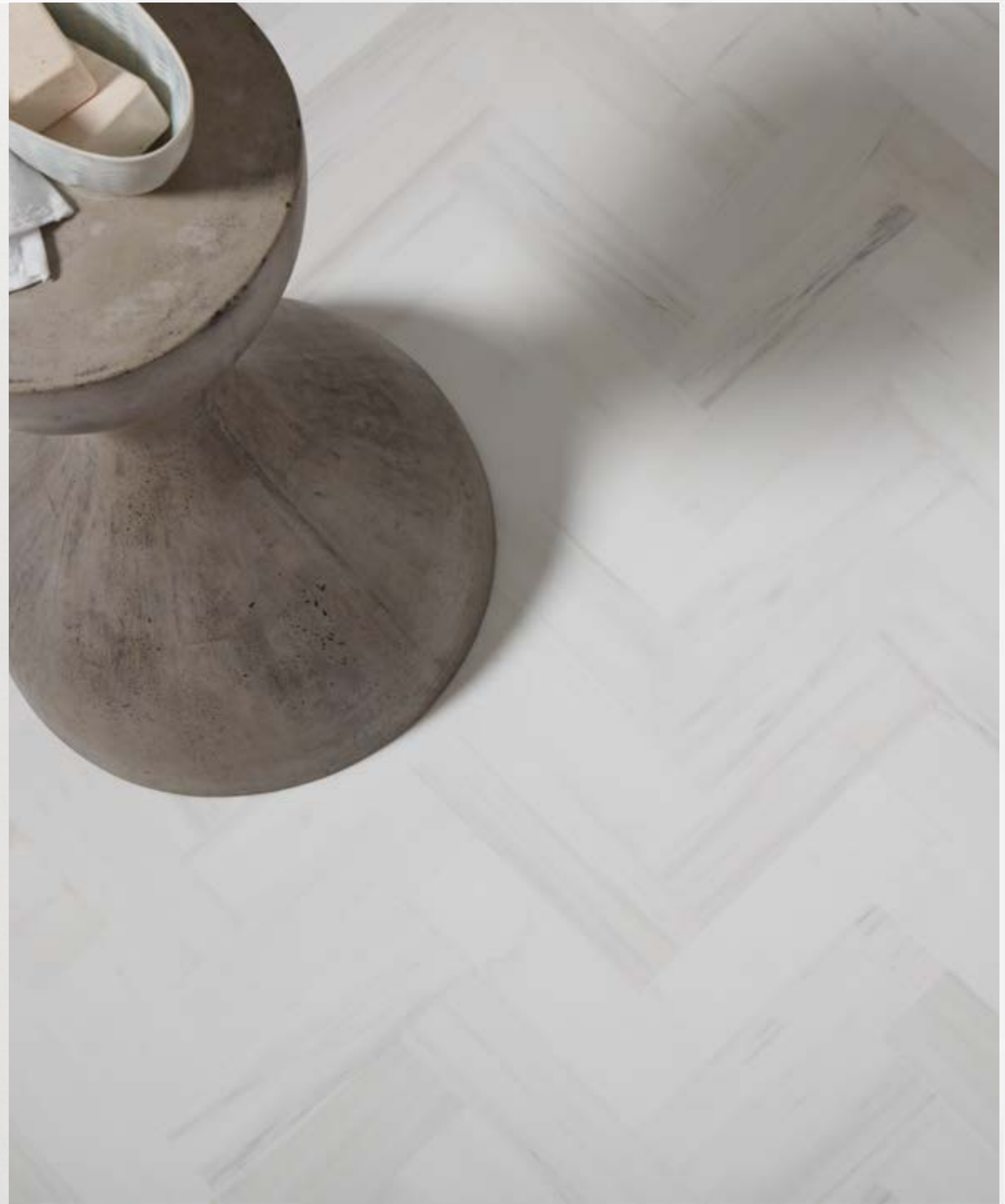
3/8" Compositon - 12 5/8" x 12 5/8" (18130)

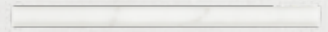


2" x 10" Chevron - 10 1/2" x 14 1/4" (18132)



1" Hexagon - 10 3/4" x 11 3/8" (18131)





Dome - 3/4" x 12" (18141)



Crown - 1 7/8" x 12" (18142)



Field - 3" x 10" (18143)



Field - 8" x 12" (18144)



Hexagon Field - 5" x 5 7/8" (18145)



3/8" Compositon - 12 5/8" x 12 5/8" (18146)



2" x 10" Chevron - 10 1/2" x 14 1/4" (18148)



1" Hexagon - 10 3/4" x 11 3/8" (18147)

# HONED TUNISIAN GREY



Dome - 3/4" x 12" (18149)



Crown - 1 7/8" x 12" (18150)



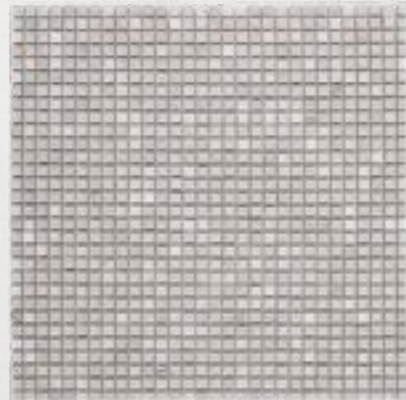
Field - 3" x 10" (18151)



Field - 8" x 12" (18152)



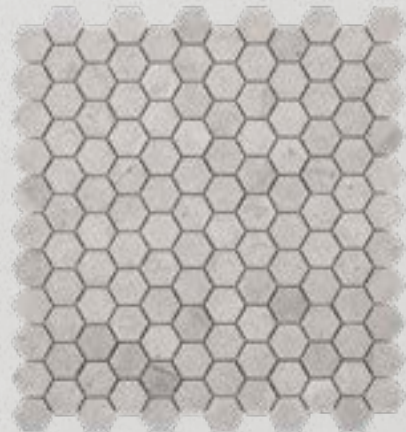
Hexagon Field - 5" x 5 7/8" (18153)



3/8" Compositon - 12 5/8" x 12 5/8" (18154)



2" x 10" Chevron - 10 1/2" x 14 1/4" (18156)



1" Hexagon - 10 3/4" x 11 3/8" (18155)



Pictured: Tunisian Grey | 2" x 10" Chevron - 10 1/2" x 14 1/4" (18156)



Dome - 3/4" x 12" (18133)



Crown - 1 7/8" x 12" (18134)



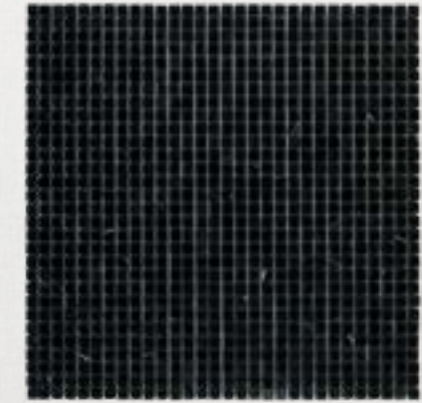
Field - 3" x 10" (18135)



Field - 8" x 12" (18136)



Hexagon Field - 5" x 5 7/8" (18137)



3/8" Compositon - 12 5/8" x 12 5/8" (18138)



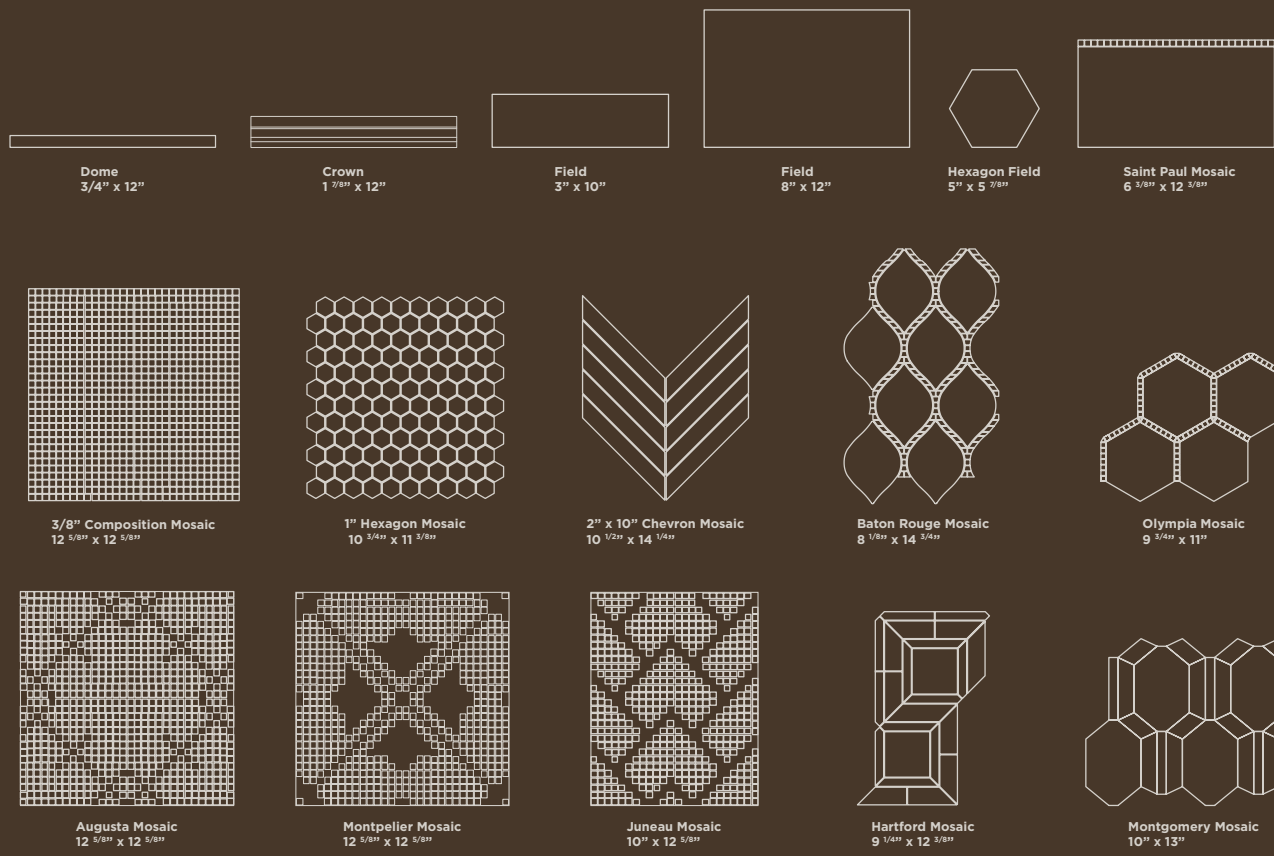
2" x 10" Chevron - 10 1/2" x 14 1/4" (18140)



1" Hexagon - 10 3/4" x 11 3/8" (18139)

# PRODUCT OFFERINGS

ROTUNDA	Dome 3/4" x 12"	Crown 1 7/8" x 12"	Field 3" x 10"	Field 8" x 12"	Hexagon Field 5" x 5 7/8"	3/8" Composition Mosaic 12 5/8" x 12 5/8"	1" Hexagon Mosaic 10 3/4" x 11 3/8"	2" x 10" Chevron Mosaic 10 1/2" x 14 1/4"	Saint Paul Mosaic 6 3/8" x 12 3/8"	Olympia Mosaic 9 3/4" x 11"	Baton Rouge Mosaic 8 1/8" x 14 3/4"	Augusta Mosaic 12 5/8" x 12 5/8"	Montpellier Mosaic 12 5/8" x 12 5/8"	Juneau Mosaic 10" x 12 5/8"	Hartford Mosaic 9 1/4" x 12 3/8"	Montgomery Mosaic 10" x 13"
Dolomite	18125	18126	18127	18128	18129	18130	18131	18132	18157	18160	18163					
Nero Marquina	18133	18134	18135	18136	18137	18138	18139	18140	18158	18161	18164	18166	18168	18170		
Calacatta Gold	18141	18142	18143	18144	18145	18146	18147	18148								
Tunisian Grey	18149	18150	18151	18152	18153	18154	18155	18156	18159	18162	18165	18167	18169	18171		
Beige															18172	18174
Grey															18173	18175



Cover Image: **Dolomite** | Baton Rouge 8 1/8" x 14 3/4" (18163) ;  
 Field - 3" x 10" (18127) ;  
 Crown - 1 7/8" x 12" (18126)

Please Note:  
 All product shots are artistic interpretations of actual product. Due to the nature of the printing process, we recommend obtaining physical samples of product for actual color representation.

Chapter 18 Rotunda Collection reflects the shade variations associated with natural stone. As with all natural stone tiles, we strongly recommend laying out and blending the tiles prior to installation. This step will ensure a proper color blend in order to achieve a classic look for your installation.

Jeffrey Court recommends installing Chapter 18 products using a high-quality white thin set. Sealing all natural stone tiles with a high quality sealer prior to grouting to ensure an easy cleaning and as part of a maintenance regimen is also highly recommended. Consult your sealer manufacturer for reapplication recommendations as part of an ongoing maintenance routine.

Designed & imported by Jeffrey Court in California.

620 Parkridge Avenue  
 Norco, California 92860

P | 951.340.3383  
 F | 951.340.2429

www.JeffreyCourt.com

