

+ONE



48"X48"

+ ONE



Floor: +One_48"x48"_Greige_Matte

CONCRETE BEAUTY

+ ONE's contemporary soul, which captures the look and the essence of poured concrete, is capable of creating a clean and simple style and giving each project a personal warm feeling and great visual charm. Its extreme attention to detail gives the environment elegance and vitality. Six outstanding color options and two finishes tell the inspiration of the authentic American industrial design, perfect for both residential and high-traffic commercial projects.

Six colors: chalk, greige, mud, ash, plumb and coal.
Available in 12"x24", 24"x24", 24"x48", and 48"x48" floor & wall tile, 12"x12" mosaics.

WALL
48"x48"

FLOOR
48"x48"

Wall: +One_48"x48"_Chalk_Matte
Floor: +One_48"x48"_Chalk_Matte
Furniture: Jem_Capriccio Grey_Polished

+ONE CONCRETE BEAUTY

4 Sizes: 12"x24" - 24"x24" - 24"x48" - 48"x48" (only matte)

6 Colors: Chalk, Greige, Mud, Ash, Plumb, Coal

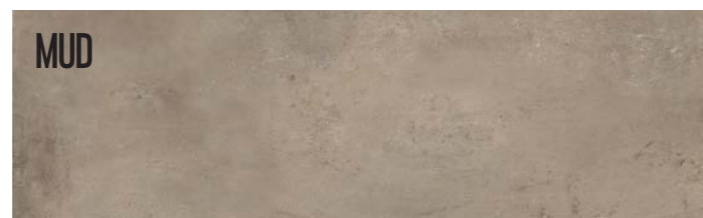
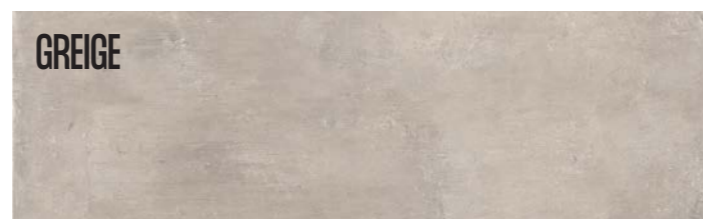
2 Surfaces: Matte & Polished

48"x48"
AVAILABLE IN:
CHALK
GREIGE
ASH
COAL

24"x24"

12"x24"

24"x48"



OUTDOOR

3 Sizes: 12"x48" - 24"x24" - 24"x48" - 20 mm

3 Colors: Chalk, Greige, Ash

1 Surface: Matte

24"x24"

24"x48"

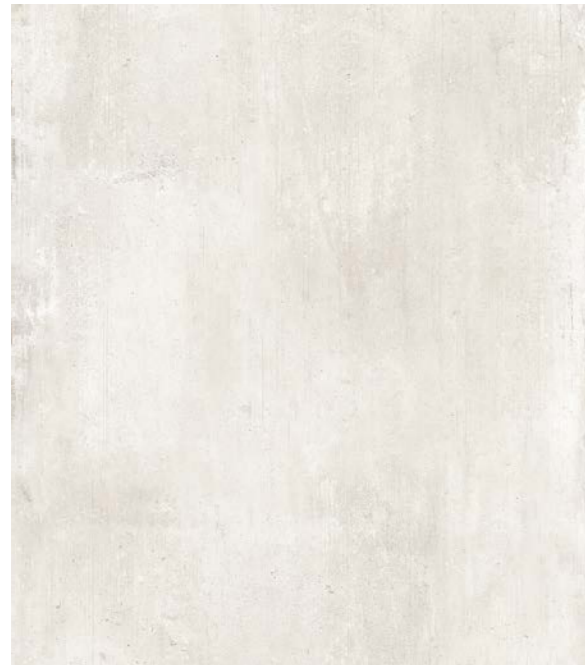
12"x48"

Available in:



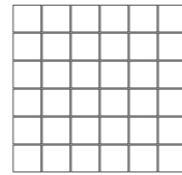
CHALK

Sizes, mosaic and trim pieces



12"x24" - 1101130 Matte
 12"x24" - 1101226 Polished
 24"x24" - 1101112 Matte
 24"x24" - 1101208 Polished
 24"x48" - 1101088 Matte
 24"x48" - 1101184 Polished
 48"x48" - 1103357 Matte

Thickness 20mm
 12"x48" - 1101411 Matte
 24"x24" - 1101414 Matte
 24"x48" - 1101841 Matte



12"x12" Mosaic (2"x2" - 36 dot)
 1101148 Matte
 1101238 Polished



3"x24" Bullnose
 1101142 Matte
 1101232 Polished



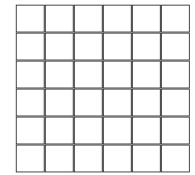
6"x12" Cove Base
 (*special order only)
 1101136

MUD

Sizes, mosaic and trim pieces



12"x24" - 1101132 Matte
 12"x24" - 1101228 Polished
 24"x24" - 1101114 Matte
 24"x24" - 1101210 Polished
 24"x48" - 1101090 Matte
 24"x48" - 1101186 Polished



12"x12" Mosaic (2"x2" - 36 dot)
 1101150 Matte
 1101240 Polished



3"x24" Bullnose
 1101144 Matte
 1101234 Polished



6"x12" Cove Base
 (*special order only)
 1101138

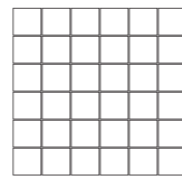
GREIGE

Sizes, mosaic and trim pieces



12"x24" - 1101131 Matte
 12"x24" - 1101227 Polished
 24"x24" - 1101113 Matte
 24"x24" - 1101209 Polished
 24"x48" - 1101089 Matte
 24"x48" - 1101185 Polished
 48"x48" - 1103358 Matte

Thickness 20mm
 12"x48" - 1101412 Matte
 24"x24" - 1101415 Matte
 24"x48" - 1101842 Matte



12"x12" Mosaic (2"x2" - 36 dot)
 1101149 Matte
 1101239 Polished



3"x24" Bullnose
 1101143 Matte
 1101233 Polished



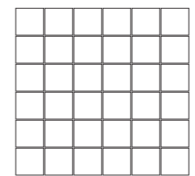
6"x12" Cove Base
 (*special order only)
 1101137

ASH

Sizes, mosaic and trim pieces



12"x24" - 1101133 Matte
 12"x24" - 1101229 Polished
 24"x24" - 1101115 Matte
 24"x24" - 1101211 Polished
 24"x48" - 1101091 Matte
 24"x48" - 1101187 Polished
 48"x48" - 1103359 Matte



12"x12" Mosaic (2"x2" - 36 dot)
 1101151 Matte
 1101241 Polished



3"x24" Bullnose
 1101145 Matte
 1101235 Polished



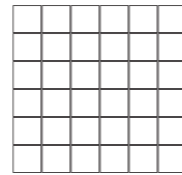
6"x12" Cove Base
 (*special order only)
 1101139

PLUMB

Sizes, mosaic and trim pieces



12"x24" - 1101134 Matte
 12"x24" - 1101230 Polished
 24"x24" - 1101116 Matte
 24"x24" - 1101212 Polished
 24"x48" - 1101092 Matte
 24"x48" - 1101188 Polished



12"x12" Mosaic (2"x2" - 36 dot)
 1101152 Matte
 1101242 Polished



3"x24" Bullnose
 1101146 Matte
 1101236 Polished



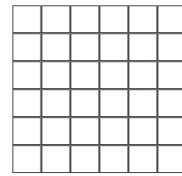
6"x12" Cove Base
 (*special order only)
 1101140

COAL

Sizes, mosaic and trim pieces



12"x24" - 1101135 Matte
 12"x24" - 1101231 Polished
 24"x24" - 1101117 Matte
 24"x24" - 1101213 Polished
 24"x48" - 1101093 Matte
 24"x48" - 1101189 Polished
 48"x48" - 1103360 Matte



12"x12" Mosaic (2"x2" - 36 dot)
 1101153 Matte
 1101243 Polished



3"x24" Bullnose
 1101147 Matte
 1101243 Polished



6"x12" Cove Base
 (*special order only)
 1101141



Floor: +One_12"x24" _24"x24" _Chalk_Matte



Floor: +One_24"x48"_Greige_Matte
Backsplash: +One_12"x24"_Greige_Polished





Floor: +One_24"x24"_Plumb_Matte
Backsplash: +One_12"x12"_Mosaic_Plumb_Polished



Floor: +One_48"x48"_Coal_Matte



Floor: +One_24"x48"_Coal_Matte





Floor: +One_12"x48"_Greige_2 CM



Floor: +One_24"x24"_Ash_2 CM

Colors + Sizes

RECTIFIED COLOR BODY



| Colors | 12"x24" | 24"x24" | 24"x48" | 48"x48" | 12"x48" 2 cm | 24"x24" 2 cm | 24"x48" 2 cm | 12"x12" mosaic (2"x2") | 3"x24" bullnose | 6"x12" cove base |
|--------|---|---|---|------------------|------------------|------------------|------------------|---|---|---------------------|
| CHALK | 1101130 Matte 1101226 Polished | 1101112 Matte 1101208 Polished | 1101088 Matte 1101184 Polished | 1103357 Matte | 1101411 Matte | 1101414 Matte | 1101841 Matte | 1101148 Matte 1101238 Polished | 1101142 Matte 1101232 Polished | 1101136 |
| GREIGE | 1101131 Matte 1101227 Polished | 1101113 Matte 1101209 Polished | 1101089 Matte 1101185 Polished | 1103358 Matte | 1101412 Matte | 1101415 Matte | 1101842 Matte | 1101149 Matte 1101239 Polished | 1101143 Matte 1101233 Polished | 1101137 |
| MUD | 1101132 Matte 1101228 Polished | 1101114 Matte 1101210 Polished | 1101090 Matte 1101186 Polished | - | - | - | - | 1101150 Matte 1101240 Polished | 1101144 Matte 1101234 Polished | 1101138 |
| ASH | 1101133 Matte 1101229 Polished | 1101115 Matte 1101211 Polished | 1101091 Matte 1101187 Polished | 1103359 Matte | 1101413 Matte | 1101416 Matte | 1101843 Matte | 1101151 Matte 1101241 Polished | 1101145 Matte 1101235 Polished | 1101139 |
| PLUMB | 1101134 Matte 1101230 Polished | 1101116 Matte 1101212 Polished | 1101092 Matte 1101188 Polished | - | - | - | - | 1101152 Matte 1101242 Polished | 1101146 Matte 1101236 Polished | 1101140 |
| COAL | 1101135 Matte 1101231 Polished | 1101117 Matte 1101213 Polished | 1101093 Matte 1101189 Polished | 1103360 Matte | - | - | - | 1101153 Matte 1101243 Polished | 1101147 Matte 1101243 Polished | 1101141 |

Technical Specifications



This product meets or exceeds all standards described in ANSI A137.1 & A137.3.
Este producto cumple o excede todos los estandares de ANSI A137.1 & A137.3.

| | SPECS | TEST METHOD | INDUSTRY STANDARD | MILE ^{stone} VALUES | |
|--|--|-------------|--|------------------------------|------------|
| | WATER ABSORPTION | ASTM C373 | ≤0.5% | ≤0.5% | |
| | SURFACE WEAR RESISTANCE | ANSI A137.1 | Surface Wear-resistance properties of glazed vitreous and porcelain tiles. | ALL RESIDENTIAL / COMMERCIAL | |
| | CHEMICAL RESISTANCE | ASTM C650 | A tile sample is placed in continuous contact with a variety of chemicals for 24 hours. Sample must show no visible defects. | NOT AFFECTED | |
| | D.C.O.F. AcuTest® | ANSI A326.3 | INDOOR ≥0.42 WET | ≥0.42 WET | |
| | | | OUTDOOR >0.55 WET | >0.55 WET 2CM & GRIP | |
| | STAIN RESISTANCE | ASTM C1378 | Surfaces are exposed to staining agents for 24 hours followed by four cleaning procedures. Results are recorded post cleaning. | NOT AFFECTED | |
| | BREAKING STRENGTH GAUGED PORCELAIN 6MM | ASTM C1505 | ≥175 lbf | ≥200 lbf | |
| | BREAKING STRENGTH | ASTM C648 | ≥275 lbf | ≥300 lbf | |
| | BREAKING STRENGTH OUTDOOR 2CM | ASTM 1505 | 2000 lbf (10.9 kN) | ≥2500 lbf | |
| | RESISTANCE TO FREEZE | ASTM C1026 | A tile sample is subjected to repeated processes of freezing and thawing. Sample must show no visible defects. | RESISTANT | |
| | WARPAGE EDGE | ASTM C485 | ±0.40% or ±0.05 in (±1.8 mm) | ± 0.40% | Rectified |
| | WARPAGE DIAGONAL | ASTM C485 | ±0.40% or ±0.07 in (±1.8 mm) | ± 0.40% | Rectified |
| | WEDGING | ASTM C502 | ±0.25% or ±0.03 in (±0.8 mm) | ± 0.25% | Rectified |
| | WARPAGE EDGE | ASTM C485 | ±0.50% or ±0.07 in (±1.8 mm) | ± 0.50% | Calibrated |
| | WARPAGE DIAGONAL | ASTM C485 | ±0.50% or ±0.07 in (±1.8 mm) | ± 0.50% | Calibrated |
| | WEDGING | ASTM C502 | ±0.50% or ±0.08 in (±2.0 mm) | ± 0.50% | Calibrated |
| | THICKNESS GAUGED PORCELAIN | ASTM C499 | Range: ± 0.02 in | ≤0.02 in | |
| | THICKNESS | ASTM C499 | Range: ± 0.04 in | ≤0.04 in | |
| | LENGTH / WIDTH VARIATION | ASTM C499 | ±0.25% or ±0.03 in (±0.8 mm) | ±0.25% | |

• Due to the inherent nature of fired porcelain tile, it is important to note that the coefficient of friction may vary within and between product runs.

Green Certifications & Accreditations

| | DESCRIPTION |
|--|--|
| | Declare labels disclose all intentionally added ingredients and residuals present in the final product. Being Red List Free means the worst materials, chemicals, and elements for human and environmental health are not present within our products. |
| | The Health Product Declaration Collaborative transparency declaration for all of Florim USA's naturally occurring materials. |
| | Certification of plant and product specific Environmental Product Declaration (EPD) which tracks environmental impacts from the production of porcelain tile. |
| | Tile Council of North America and the American National Standards Institute's standard for sustainability and environmental impact. |
| | Underwriter's Laboratories certification of low emitting materials. Florim USA is Green Guard Gold certified. |
| | Defines post-consumer content of as much as 3% recycled material which reduces landfill impact. Certified by Bureau Veritas. |
| | Defines pre-consumer content of as much as 45% recycled material which reduces our carbon footprint. Certified by Bureau Veritas. |
| | Florim USA's sustainability and social practices support the mission of The International Living Future Institute which strives to create a socially just, culturally rich, and ecologically restorative community. |
| | USGBC is committed to suit a more sustainable life. Florim USA supports this mission by manufacturing products which aid architects in achieving USGBC certification. |
| | Florim USA sources >95% raw material within a 500 mile radius, which results in a smaller carbon footprint. |
| | Florim USA actively participates in the Tile Council of North America which allows us to be on the forefront of advances in the tile industry and its standards. |
| | The Tennessee Recycling Coalition is dedicated to promoting recycling and sustainable material management practices, and awarded Florim USA the Tennessee Recycler of the Year award for 2020. |
| | ISO 9001 & ISO 14001 are globally recognized standards. ISO 9001 certifies that Florim USA products and practices continually meet and exceed customer and regulatory requirements. ISO 14001 certifies that Florim USA complies with environmental regulations and that it's manufacturing practices are environmentally conscious. |
| | Florim USA updated its corporate charter in 2022 to become a Benefit Corporation. Our company is committed to maintaining this designation through initiatives focused on sustainability, social responsibility, ethical business practices and transparent, annual reporting on our social and environmental performance. |

Progress that invests in the entire society

As an active member of the U.S Green Building Council, MILE[®]stone spreads awareness to the community and encourages the use of building solutions through environmentally friendly practices.

Our products positively contribute to the requirements for obtaining the LEED (Leadership in Energy and Environmental Design) and WELL (IWBI) certifications.

A commitment to environmental sustainability and responsibility

We are committed to conscious development that minimizes the negative impact of manufacturing production on the environment. Our general approach to sustainability intersects with our business strategy to embrace three areas of responsibility: economic, social, and environmental. Some ways we prove this are:

- Products containing as much as 45% recycled content.
- Post-consumer recycled content levels as much as 3%.
- Zero industrial wastewater discharge.
- A 99% internal process recycling rate.
- Local sourcing of >95% raw materials (within 500-mile radius of factory) resulting in low transportation related carbon emissions.

MILE[®]stone is taking these and other steps, as well as actively investing to reduce carbon emissions to ensure that we reach full carbon neutrality.



Cleaning & Maintenance / Routine Care Instructions



Scan the QR code with your smartphone.

MADE IN THE USA



300 International Blvd. Clarksville, TN 37040 | www.milestonetiles.com | 1-877-356-7461

