

S A B I



S A B I

TIME, **WEAR, LIVED IN**

Sabi reflects the beauty of what evolves over time, not as imperfection, but as **depth, memory, and presence.**

It draws from the traces life leaves behind and transforms them into a **surface language** that feels warm and intimate. Its design process was deeply handmade and artisanal, beginning with **coffee stains created on watercolor** paper and observed over time as they evolved. What first appeared as marks gradually became memory. With the support of technology, those stains were carefully edited and refined, preserving only the **most beautiful traces.**



Sabi Bone 6x6 GLOSSY PRESSED
Sabi Bone Lines 6x6 GLOSSY PRESSED



What gives that atmosphere its **precision** is an **exceptional** level of technical control. A high-gloss surface at a 92-gloss level, a premium market standard, is paired with **a delicate**, controlled **micro-relief** created through a subtle grit effect. This balance of sheen and texture gives the collection unusual depth, allowing light and touch to reveal the surface in layers.



Sabi Earth Edge 2x10 GLOSSY PRESSED
Sabi Earth Lines 2x10 GLOSSY PRESSED



Sabi Indigo 2x10 GLOSSY PRESSED
Sabi Indigo Edge 2x10 GLOSSY PRESSED
Sabi Indigo Lines 2x10 GLOSSY PRESSED



As a **cross-collection connector**, Sabi brings a **wabi-sabi-inspired** sensibility into the portfolio through warmed neutral tones designed to mix and match effortlessly with the **2026 launches and beyond**.

Sabi Bone Edge Lines 6x6 GLOSSY PRESSED

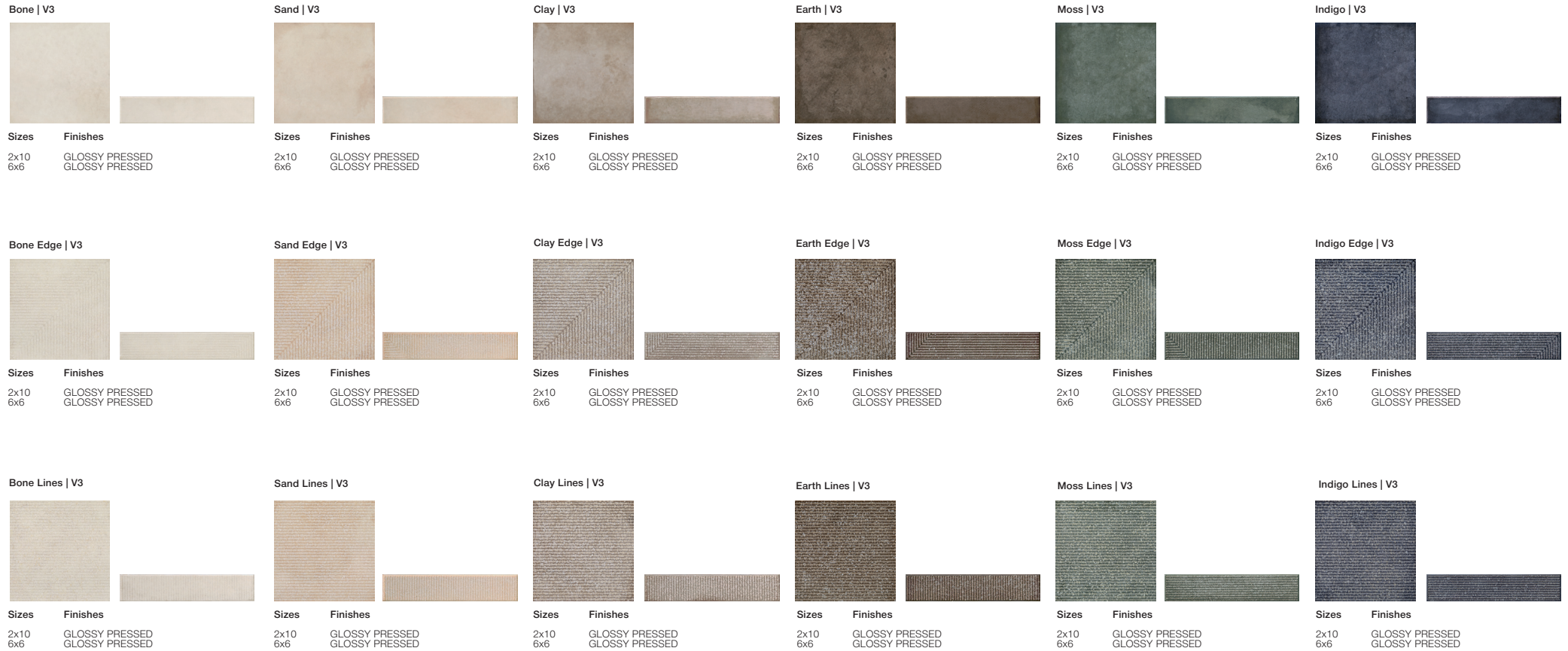


In 6x6 and 2x10 formats, it is made for layering, detailing, and compositions that feel collected, resolved, and quietly emotional. The result is a collection where **industrial precision and human sensitivity** meet in a surface that expresses innovation, depth, and intention.



Sabi Moss 2x10 GLOSSY PRESSED

SABI
Glazed Ceramic Tile



TECH DATA

Finish	Freeze Resistant	Shade Variation	Color Body	Water Absorption	Stain Resistant	DCOF AcuTest	Chemical Resistant	Breaking Strength	Mohs Hardness
GLOSSY	Not Resistant	V3	NO	≤7%	Class A	N/A	Class A	≥ 250 lbf	5

AREAS OF USAGE

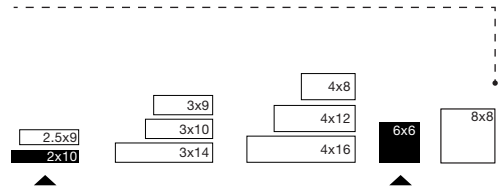
GLOSSY MATTE	Interior wall use recommended.
--------------	--------------------------------

GROUT JOINT

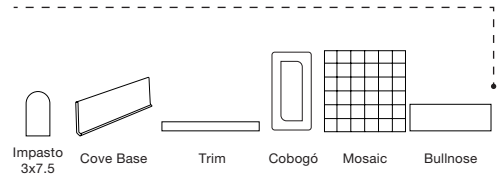
The recommended grout joint:
3/16" PRESSED

Available Sizes

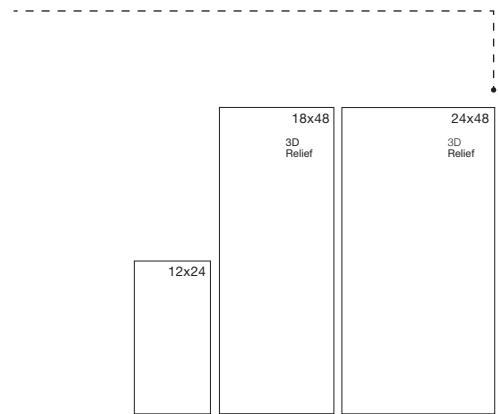
Small Formats / Wall Tile



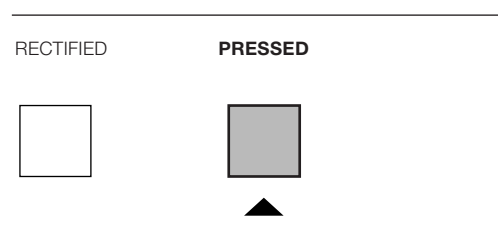
Special Pieces



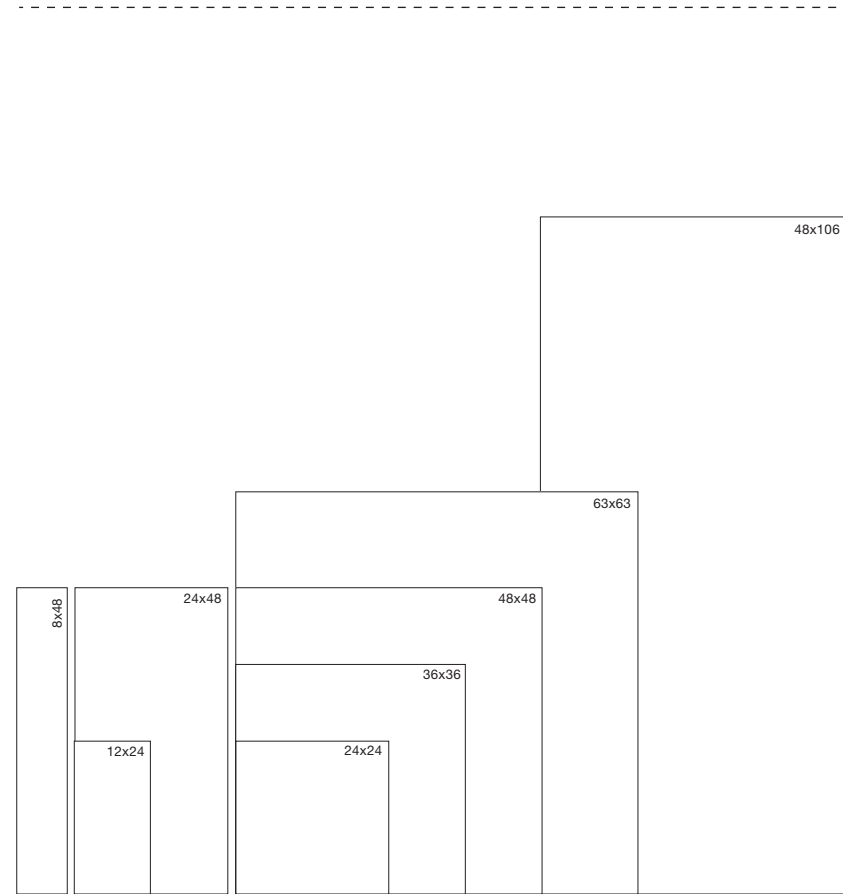
Large Format Wall Tile



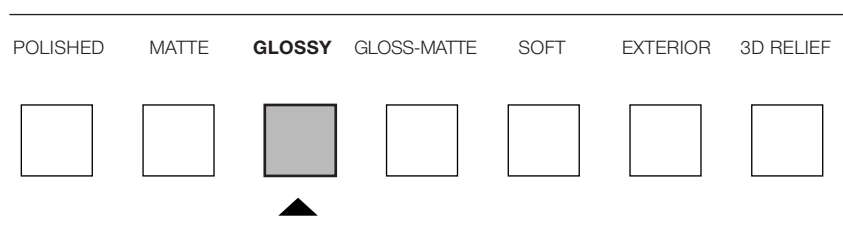
Available Edges

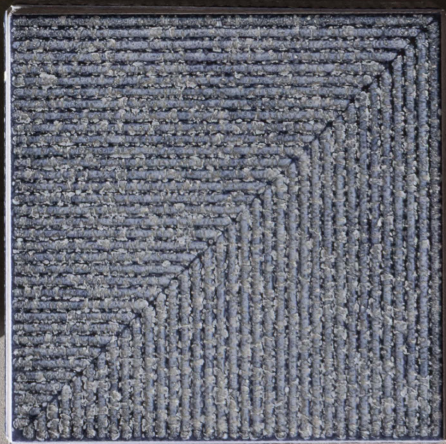
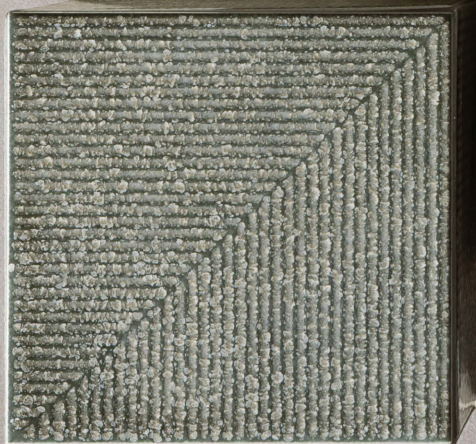
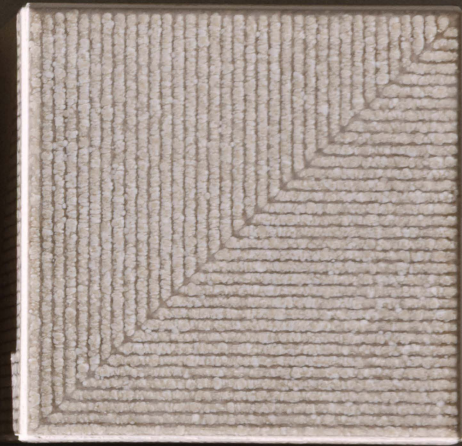
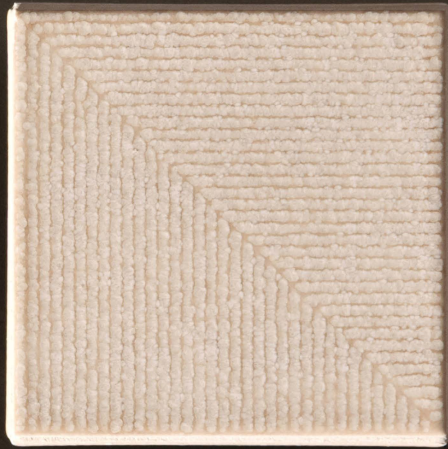
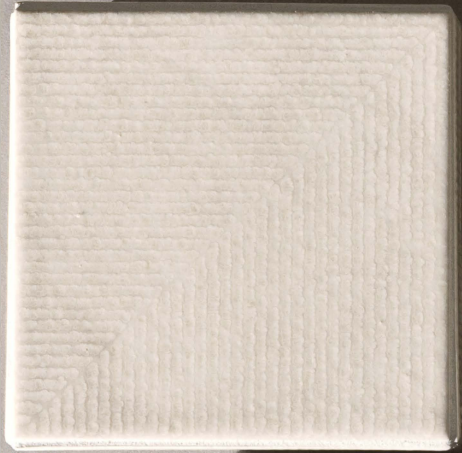


Porcelain Tiles



Available Finishes





CONESTOGATILE

