



**LIMERICK**  
Ceramic Wall Tile

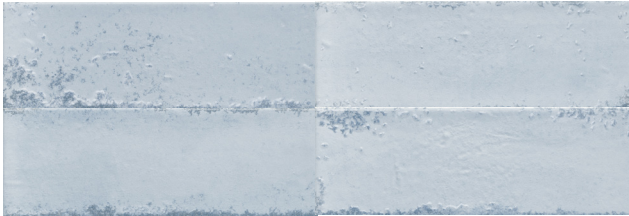
Misty Gray 3" x 9" x 1/4"



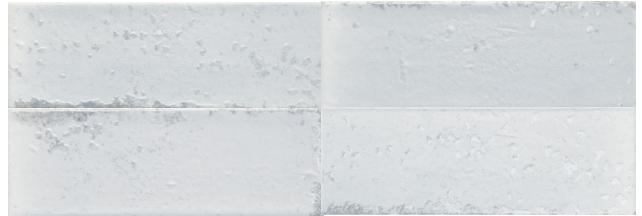
**White**  
3" x 9" x 1/4"  
IFS3X9LW



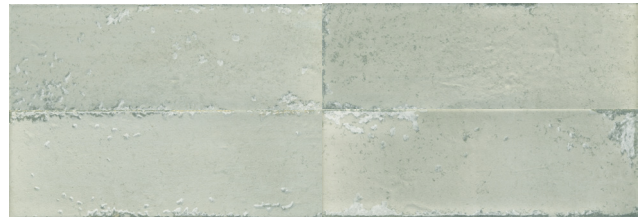
**Alabaster**  
3" x 9" x 1/4"  
IFS3X9LA



**Pale Blue**  
3" x 9" x 1/4"  
IFS3X9LPB



**Misty Gray**  
3" x 9" x 1/4"  
IFS3X9LMG



**Dollar Green**  
3" x 9" x 1/4"  
IFS3X9LDG

**TECHNICAL SPECIFICATIONS**

PRODUCT PERFORMANCE	RESULT
Water Absorption	10%<E
MOHS	3
Stain Resistance	Class 5
Breaking Strength	1000 N
Chemical Resistance	Resistant

